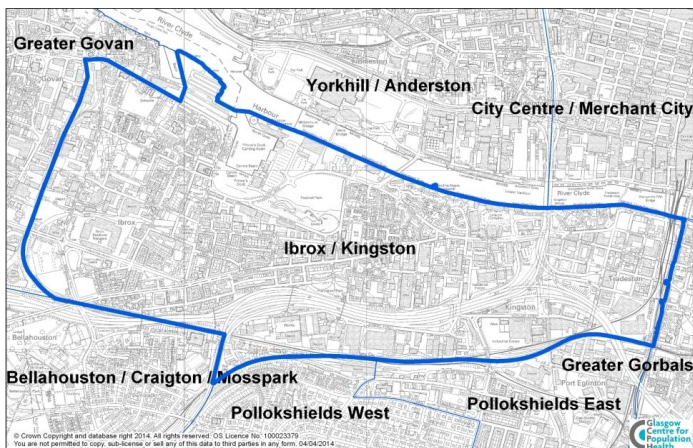


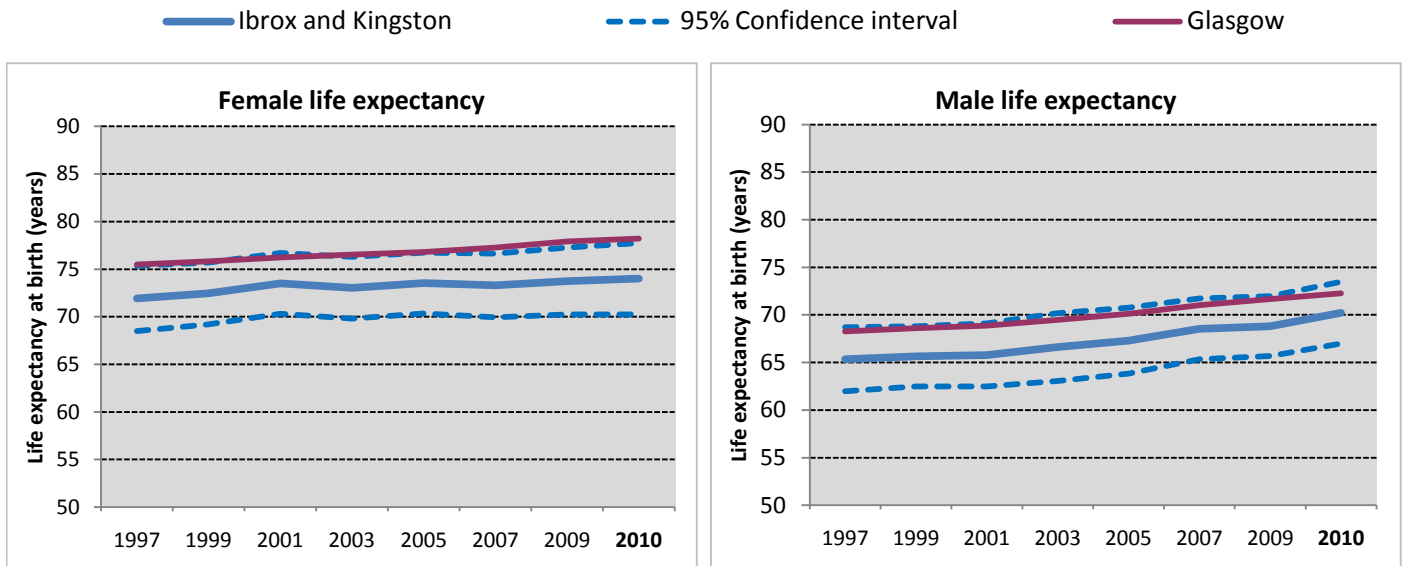
Ibrox and Kingston is a neighbourhood in the south of Glasgow with a population of 12,220.



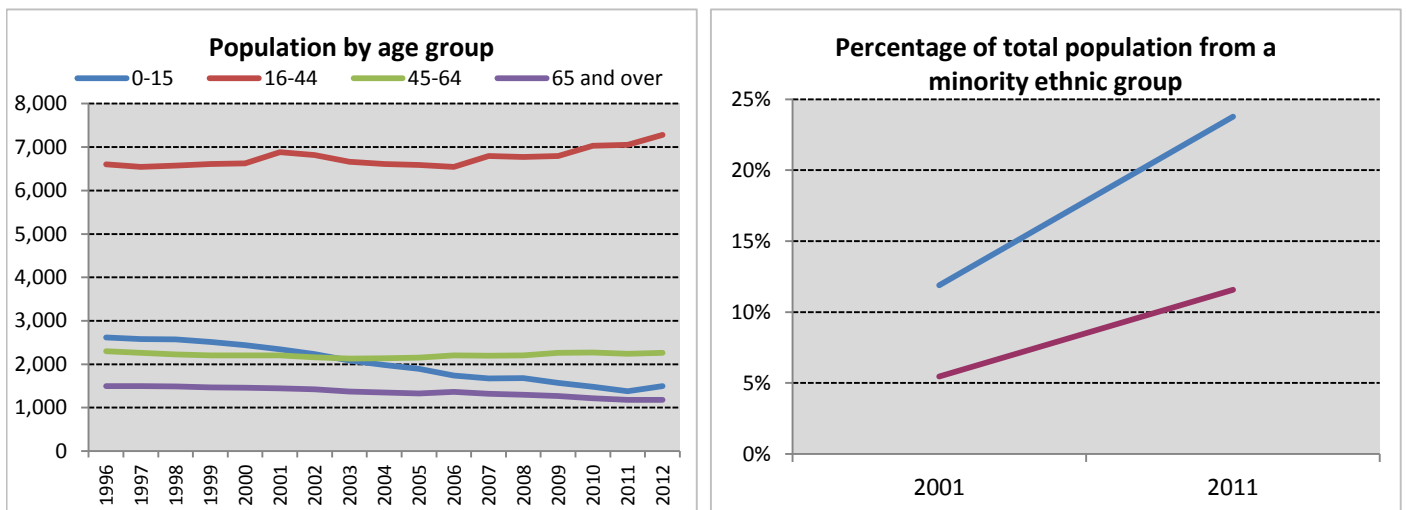
Neighbourhood comparisons with Glasgow

Women in Ibrox and Kingston live, on average, four years longer than men. The estimates of both male and female life expectancy in Ibrox and Kingston are below the Glasgow average. The area has a high proportion of people from an ethnic minority and people living within 500m of vacant or derelict land compared with the Glasgow average. There is a low proportion of young people not in education, employment or training.

Group	ID	Indicator	Count	%	Difference from Glasgow		Time Period
Population	P1	People aged 0 - 15	1,497	12.3%		-24%	2012
	P2	People aged 16 - 64	9,545	78.1%		+12%	
	P3	People aged 65 - 74	592	4.8%		-33%	
	P4	People aged 75 and over	586	4.8%		-28%	
Cultural	C1	People from an ethnic minority	2,840	23.8%		+105%	2011
	C2	People who are married, in a civil partnership, or co-habiting	3,556	36.0%		-14%	
	C3	Single parent households	366	39.0%		-3%	
	C4	Householders living alone	3,025	26.8%		+26%	
	C5	People with religious affiliation	7,267	60.8%		-2%	
Environment/ Transport	E1	People who travel to place of work or study by walking, bike or public transport	4,593	58.5%		+16%	2011
	E2	People living within 500m of vacant or derelict land	12,685	99.8%		+66%	
	E3	Households with one or more cars	2,623	42.7%		-13%	
	E4	Overcrowded households	1,270	20.7%		+19%	
Socio-economic	S1	Owner occupied households	2,255	36.7%		-20%	2011
	S2	People with grade D or E social classification	1,653	30.7%		-10%	
	S3	People in employment	5,818	58.3%		+3%	2012
	S4	People claiming Employment and Support Allowance	505	4.1%		+20%	
	S5	People claiming out of work benefits	1,940	20.7%		-3%	
Education	ED1	Adults with qualifications at Higher level and above	5,923	56.1%		+16%	2011
	ED2	Young people not in education, employment or training	55	9.1%		-23%	
Poverty	PO1	People in income deprivation	2,525	20.7%		-3%	2012
	PO2	People of working age in employment deprivation	1,785	19.0%		-1%	2011
	PO3	Children in poverty	605	37.5%		+17%	
Health	H1	People in "good" or "very good" health	9,500	79.5%		+3%	2011
	H2	People limited "a lot" or "a little" by disability	2,357	19.7%		-13%	
	H3	Male life expectancy	70.2 years			-3%	2008 - 2012
	H4	Female life expectancy	74.0 years			-5%	



Life expectancy for both males and females has risen in recent years in Ibrox and Kingston, but has stayed consistently below the Glasgow average. In the most recent period shown (2008-12), life expectancy was also lower than the Scottish average for both men and women.



The overall population of Ibrox and Kingston has fallen by around 6% between 1996 and 2012. The decrease was apparent in all age categories except the age group 16-44. The percentage of the total neighbourhood population from a minority ethnic group increased from 12% in 2001 to 24% in 2011. The percentage of the neighbourhood's population from an ethnic minority group was above the Glasgow average from 2001 to 2011.

Notes

1. Data sources: Scottish Index of Multiple Deprivation (SIMD) 2012, Census 2011, Census 2001, HMRC, NOMIS, National Records of Scotland (NRS) and Scottish Government.
2. Populations presented in the population trend chart and used to calculate life expectancy estimates are taken from NRS small area population estimates and are based on: the 2001 census for the years 1996 - 2001; both the 2001 and 2011 census for the years 2002 - 2010; and the 2011 census for the years 2011-2012.
3. The Income deprivation and Employment deprivation indicators are derived from SIMD 2012, more information on this deprivation index can be found at: <http://simd.scotland.gov.uk/publication-2012>
4. Life expectancies are calculated based on population estimates and death registrations. 95% confidence intervals have been added on the graphs to give an indication of their accuracy. The x-axes of the life expectancy graphs give the mid-year for each life expectancy estimate e.g. 2010 represents the life expectancy estimate for the period 2008 - 2012.
5. A notes and definitions document providing further information on the variables presented in the profile can be found in the Profiles section of the Understanding Glasgow website.