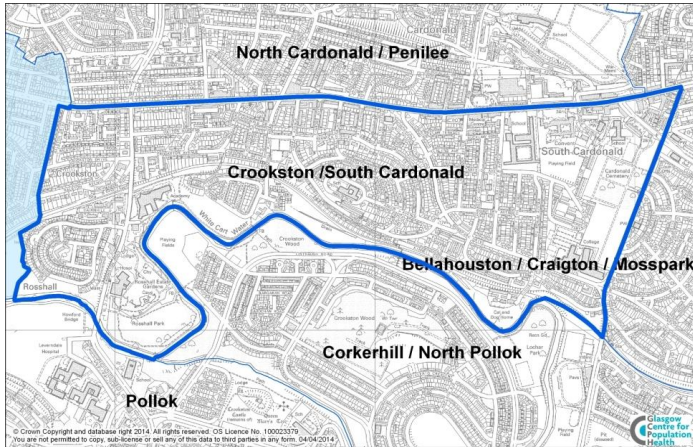


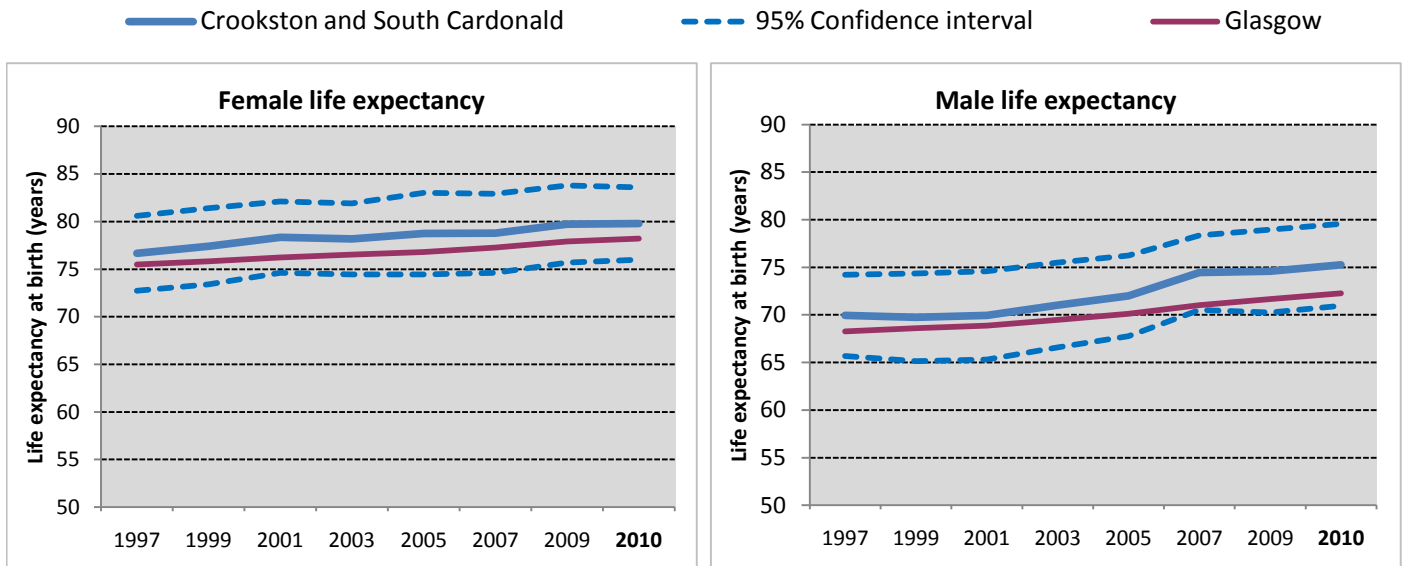
Crookston and South Cardonald is a neighbourhood in the south of Glasgow with a population of 7,782.



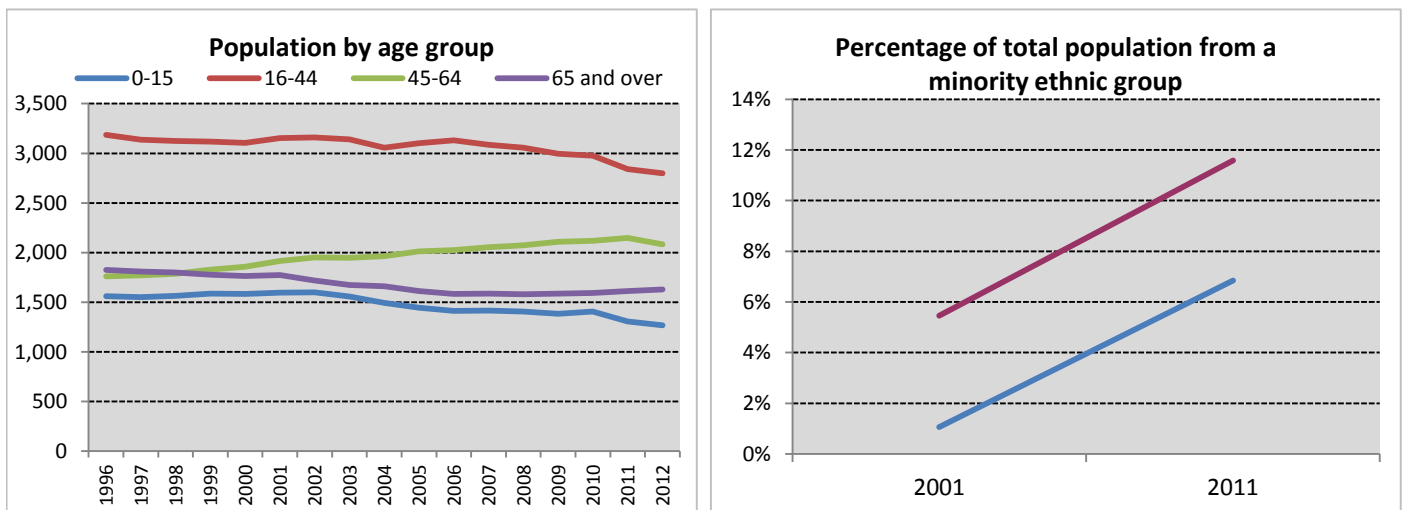
Neighbourhood comparisons with Glasgow

Women in Crookston and South Cardonald live, on average, four and a half years longer than men. The estimates of both male and female life expectancy in Crookston and South Cardonald are above the Glasgow average. The area has a low proportion of people from an ethnic minority and a high proportion of owner occupied households compared with the Glasgow average. The proportion of people living within 500m of vacant or derelict land is particularly low compared with the Glasgow average.

Group	ID	Indicator	Count	%	Difference from Glasgow	Time Period
Population	P1	People aged 0 - 15	1,269	16.3%		+1%
	P2	People aged 16 - 64	4,884	62.8%		-10%
	P3	People aged 65 - 74	768	9.9%		+36%
	P4	People aged 75 and over	861	11.1%		+65%
Cultural	C1	People from an ethnic minority	553	6.9%		-41%
	C2	People who are married, in a civil partnership, or co-habiting	3,090	47.0%		+12%
	C3	Single parent households	362	38.4%		-5%
	C4	Householders living alone	1,578	19.9%		-6%
	C5	People with religious affiliation	5,448	67.5%		+9%
Environment/ Transport	E1	People who travel to place of work or study by walking, bike or public transport	2,106	44.6%		-11%
	E2	People living within 500m of vacant or derelict land	40	0.5%		-99%
	E3	Households with one or more cars	2,081	54.5%		+11%
	E4	Overcrowded households	562	14.7%		-15%
Socio-economic	S1	Owner occupied households	2,440	63.9%		+40%
	S2	People with grade D or E social classification	917	34.1%		+0%
	S3	People in employment	3,516	60.2%		+6%
	S4	People claiming Employment and Support Allowance	225	2.9%		-16%
	S5	People claiming out of work benefits	915	19.7%		-8%
Education	ED1	Adults with qualifications at Higher level and above	2,898	43.1%		-11%
	ED2	Young people not in education, employment or training	39	11.2%		-5%
Poverty	PO1	People in income deprivation	1,525	19.6%		-8%
	PO2	People of working age in employment deprivation	820	17.5%		-8%
	PO3	Children in poverty	395	27.2%		-15%
Health	H1	People in "good" or "very good" health	6,290	77.9%		+1%
	H2	People limited "a lot" or "a little" by disability	1,919	23.8%		+5%
	H3	Male life expectancy	75.3 years			+4%
	H4	Female life expectancy	79.8 years			+2%



Life expectancy for both males and females has risen in recent years in Crookston and South Cardonald, and has stayed consistently above the Glasgow average. In the most recent period shown (2008-12), life expectancy was lower than the Scottish average for both men and women.



The overall population of Crookston and South Cardonald fell by around 7% between 1996 and 2012. The change was most noticeable in the 0-15 and 16-44 age bands. The percentage of the total neighbourhood population from a minority ethnic group increased from 1% in 2001 to 7% in 2011, but remained below the Glasgow average from 2001 to 2011.

Notes

1. Data sources: Scottish Index of Multiple Deprivation (SIMD) 2012, Census 2011, Census 2001, HMRC, NOMIS, National Records of Scotland (NRS) and Scottish Government.
2. Populations presented in the population trend chart and used to calculate life expectancy estimates are taken from NRS small area population estimates and are based on: the 2001 census for the years 1996 - 2001; both the 2001 and 2011 census for the years 2002 - 2010; and the 2011 census for the years 2011-2012.
3. The Income deprivation and Employment deprivation indicators are derived from SIMD 2012, more information on this deprivation index can be found at: <http://simd.scotland.gov.uk/publication-2012>
4. Life expectancies are calculated based on population estimates and death registrations. 95% confidence intervals have been added on the graphs to give an indication of their accuracy. The x-axes of the life expectancy graphs give the mid-year for each life expectancy estimate e.g. 2010 represents the life expectancy estimate for the period 2008 - 2012.
5. A notes and definitions document providing further information on the variables presented in the profile can be found in the Profiles section of the Understanding Glasgow website.