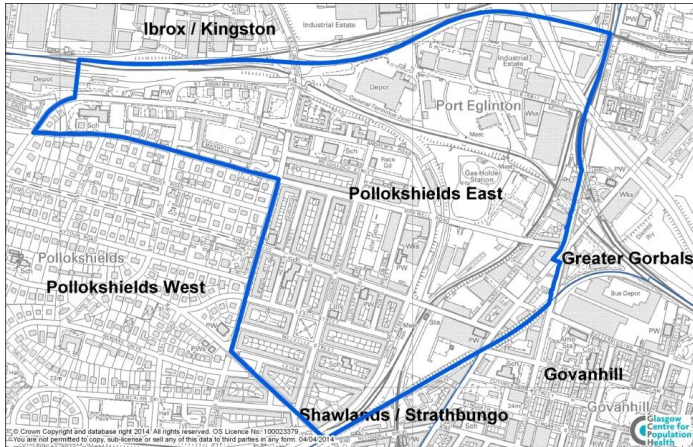


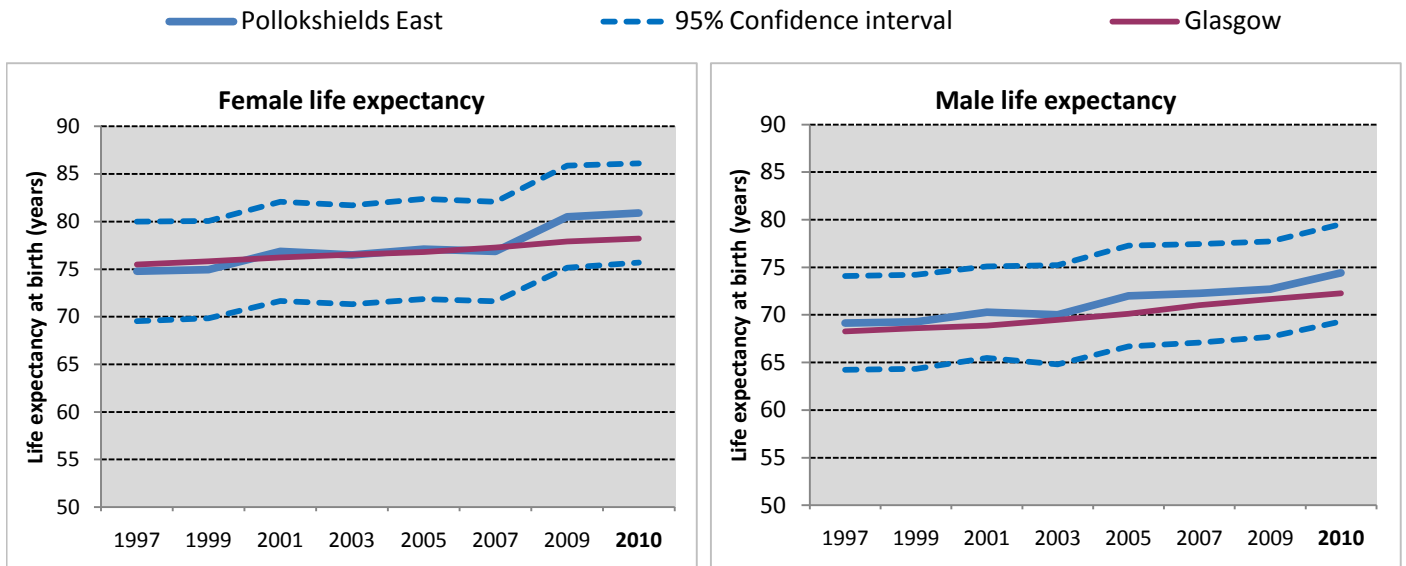
Pollokshields East is a neighbourhood in the south of Glasgow with a population of 8,206.



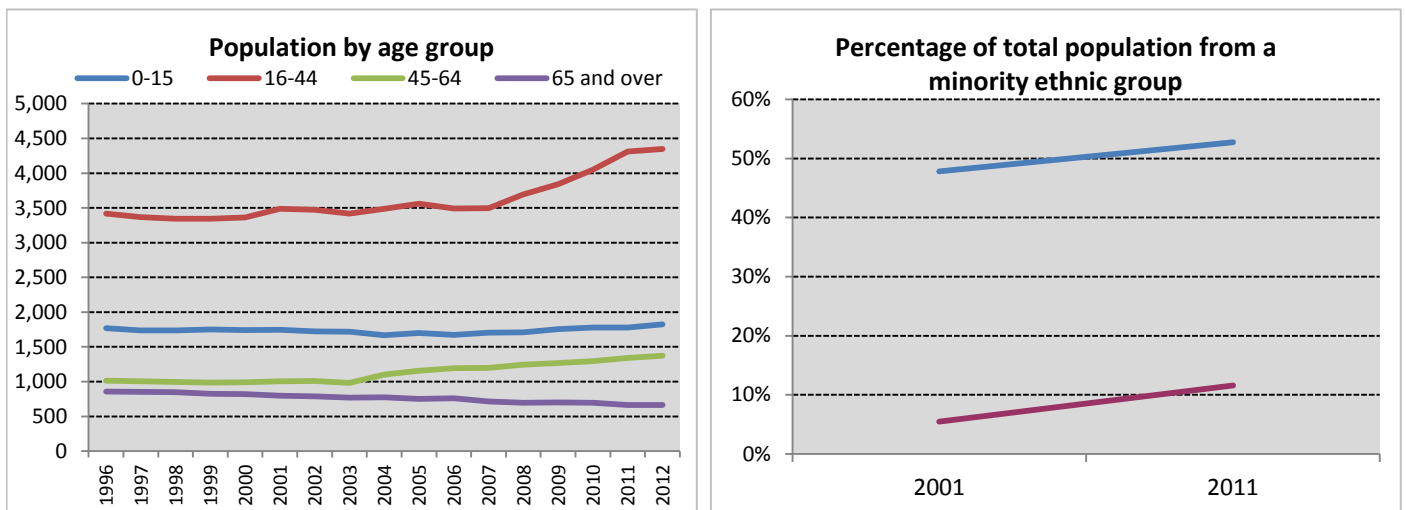
Neighbourhood comparisons with Glasgow

Estimates of male and female life expectancy in Pollokshields East are slightly higher than the Glasgow average. Women live on average for six and a half years longer than men. Twenty-two per cent of the population are children, which is much higher than the Glasgow average, while only 8% of the population are aged 65 years or older. A high proportion of the population, 53%, is from an ethnic minority. Overcrowding is an issue in a quarter of households. A lower than average proportion of the population is limited by a disability.

Group	ID	Indicator	Count	%	Difference from Glasgow		Time Period
Population	P1	People aged 0 - 15	1,823	22.2%		+37%	2012
	P2	People aged 16 - 64	5,720	69.7%		-0%	
	P3	People aged 65 - 74	329	4.0%		-45%	
	P4	People aged 75 and over	334	4.1%		-39%	
Cultural	C1	People from an ethnic minority	4,269	52.7%		+355%	2011
	C2	People who are married, in a civil partnership, or co-habiting	2,835	45.2%		+8%	
	C3	Single parent households	244	25.4%		-37%	
	C4	Householders living alone	1,367	17.0%		-20%	
	C5	People with religious affiliation	5,777	71.4%		+15%	
Environment/ Transport	E1	People who travel to place of work or study by walking, bike or public transport	2,474	48.4%		-4%	2011
	E2	People living within 500m of vacant or derelict land	7,404	93.4%		+55%	
	E3	Households with one or more cars	1,813	53.6%		+9%	
	E4	Overcrowded households	903	26.7%		+54%	
Socio-economic	S1	Owner occupied households	1,471	43.5%		-5%	2011
	S2	People with grade D or E social classification	969	33.2%		-2%	
	S3	People in employment	3,295	55.3%		-3%	
	S4	People claiming Employment and Support Allowance	275	3.4%		-3%	2012
	S5	People claiming out of work benefits	1,025	18.3%		-14%	
Education	ED1	Adults with qualifications at Higher level and above	3,598	57.1%		+18%	2011
	ED2	Young people not in education, employment or training	48	11.2%		-5%	
Poverty	PO1	People in income deprivation	1,755	21.4%		+0%	2012
	PO2	People of working age in employment deprivation	910	16.2%		-15%	2011
	PO3	Children in poverty	710	33.7%		+5%	
Health	H1	People in "good" or "very good" health	6,631	81.9%		+6%	2011
	H2	People limited "a lot" or "a little" by disability	1,461	18.1%		-21%	
	H3	Male life expectancy	74.4 years			+3%	2008 - 2012
	H4	Female life expectancy	80.9 years			+3%	



Life expectancy for both males and females has risen in recent years in Pollokshields East and has remained slightly above the Glasgow average. In the most recent period shown (2008-12), male life expectancy was estimated to be slightly lower than the Scottish average, while female life expectancy was estimated to be close to the national average.



The population in Pollokshields East increased by 16% between 1996 and 2012, largely due to an increase in the numbers of 16-44 years olds and 45-64 year olds. The percentage of the total neighbourhood population from a minority ethnic group increased from 48% in 2001 to 53% in 2011, a figure which is much higher than the Glasgow average of 12% and the Scottish average of 4%.

Notes

1. Data sources: Scottish Index of Multiple Deprivation (SIMD) 2012, Census 2011, Census 2001, HMRC, NOMIS, National Records of Scotland (NRS) and Scottish Government.
2. Populations presented in the population trend chart and used to calculate life expectancy estimates are taken from NRS small area population estimates and are based on: the 2001 census for the years 1996 - 2001; both the 2001 and 2011 census for the years 2002 - 2010; and the 2011 census for the years 2011-2012.
3. The Income deprivation and Employment deprivation indicators are derived from SIMD 2012, more information on this deprivation index can be found at: <http://simd.scotland.gov.uk/publication-2012>
4. Life expectancies are calculated based on population estimates and death registrations. 95% confidence intervals have been added on the graphs to give an indication of their accuracy. The x-axes of the life expectancy graphs give the mid-year for each life expectancy estimate e.g. 2010 represents the life expectancy estimate for the period 2008 - 2012.
5. A notes and definitions document providing further information on the variables presented in the profile can be found in the Profiles section of the Understanding Glasgow website.