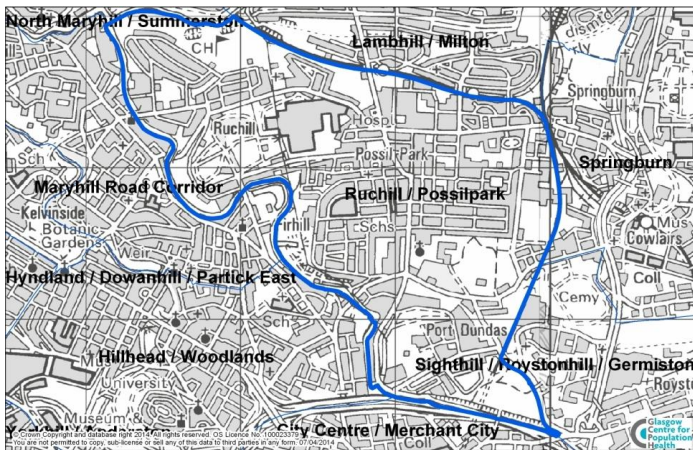


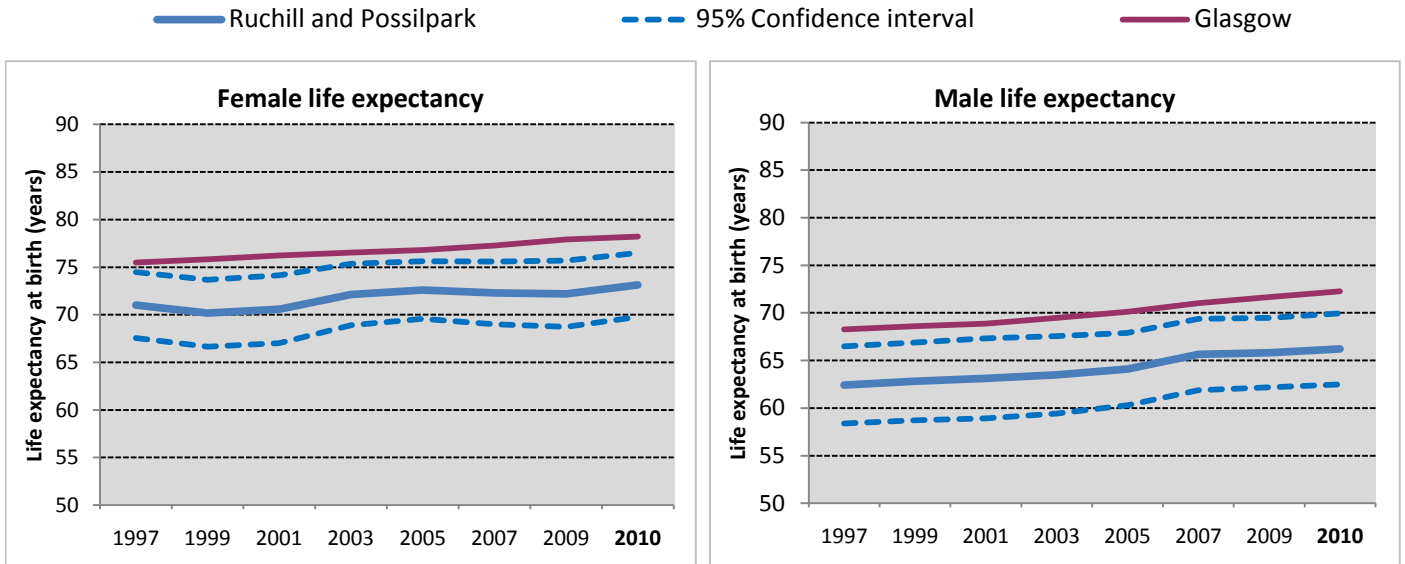
Ruchill and Possilpark is a neighbourhood in the north west of Glasgow with a population of 10,737.



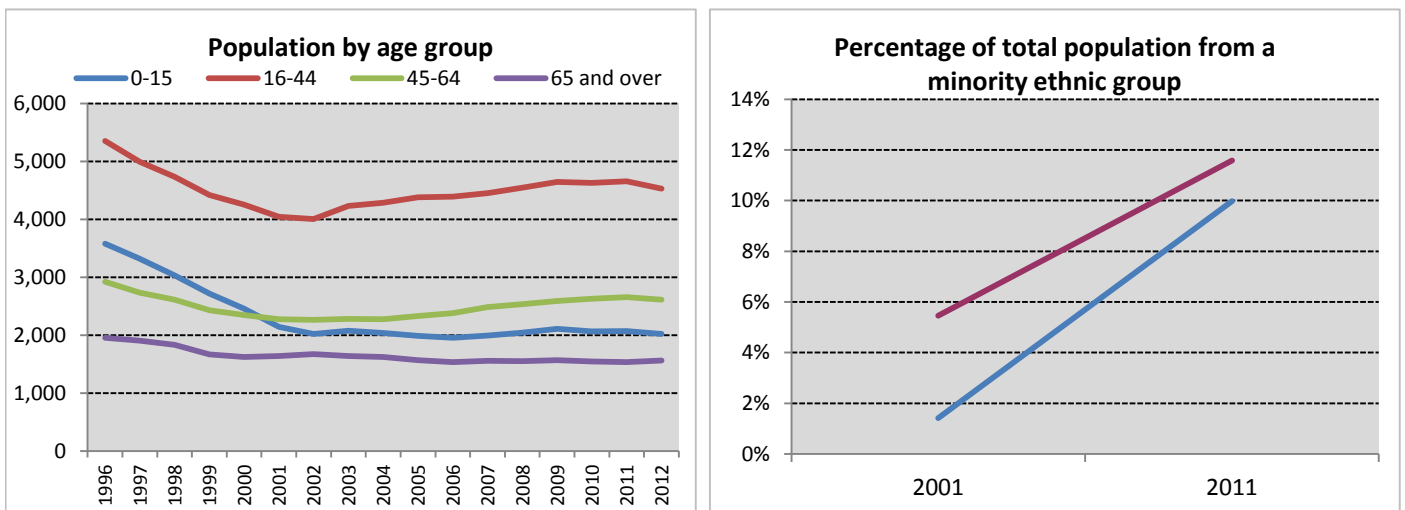
## Neighbourhood comparisons with Glasgow

Women in Ruchill and Possilpark live, on average, almost seven years longer than men. Ruchill and Possilpark had the lowest life expectancy of all neighbourhoods in Glasgow in the most recent period for both males and females. A relatively high percentage of people are also limited 'a lot' or 'a little' by a disability. The neighbourhood has a low employment rate compared with the rest of Glasgow and a high percentage of young people are not in education, employment or training. The proportion of children living in poverty is considerably higher than the Glasgow average.

Group	ID	Indicator	Count	%	Difference from Glasgow		Time Period
Population	P1	People aged 0 - 15	2,026	18.9%		+17%	2012
	P2	People aged 16 - 64	7,148	66.6%		-5%	
	P3	People aged 65 - 74	849	7.9%		+9%	
	P4	People aged 75 and over	714	6.6%		-1%	
Cultural	C1	People from an ethnic minority	1,093	10.0%		-14%	2011
	C2	People who are married, in a civil partnership, or co-habiting	2,920	33.9%		-19%	
	C3	Single parent households	765	52.9%		+31%	
	C4	Householders living alone	2,550	23.9%		+12%	
	C5	People with religious affiliation	7,075	64.6%		+4%	
Environment/ Transport	E1	People who travel to place of work or study by walking, bike or public transport	2,950	51.0%		+1%	2011
	E2	People living within 500m of vacant or derelict land	10,631	100.0%		+66%	
	E3	Households with one or more cars	1,887	34.5%		-30%	
	E4	Overcrowded households	1,077	19.7%		+13%	
Socio-economic	S1	Owner occupied households	1,222	22.3%		-51%	2011
	S2	People with grade D or E social classification	2,321	52.7%		+55%	
	S3	People in employment	3,876	47.3%		-17%	
	S4	People claiming Employment and Support Allowance	595	5.5%		+61%	2012
	S5	People claiming out of work benefits	2,475	36.0%		+68%	
Education	ED1	Adults with qualifications at Higher level and above	2,571	29.0%		-40%	2011
	ED2	Young people not in education, employment or training	144	24.5%		+108%	
Poverty	PO1	People in income deprivation	3,760	35.0%		+64%	2012
	PO2	People of working age in employment deprivation	2,260	32.6%		+71%	2011
	PO3	Children in poverty	1,130	46.9%		+46%	
Health	H1	People in "good" or "very good" health	7,520	68.7%		-11%	2011
	H2	People limited "a lot" or "a little" by disability	3,302	30.2%		+33%	
	H3	Male life expectancy	66.2 years			-8%	2008 - 2012
	H4	Female life expectancy	73.1 years			-6%	



Life expectancy for both males and females has risen in recent years in Ruchill and Possilpark but has remained considerably lower than the Glasgow and Scotland average.



The overall population in Ruchill and Possilpark decreased by 22% between 1996 and 2012, due to population decreases across all age groups, particularly among children and young adults (16-44 year olds). The percentage of the total neighbourhood population from a minority ethnic group increased from 1% in 2001 to 10% in 2011, remaining slightly lower than the Glasgow average.

Notes

1. Data sources: Scottish Index of Multiple Deprivation (SIMD) 2012, Census 2011, Census 2001, HMRC, NOMIS, National Records of Scotland (NRS) and Scottish Government.
2. Populations presented in the population trend chart and used to calculate life expectancy estimates are taken from NRS small area population estimates and are based on: the 2001 census for the years 1996 - 2001; both the 2001 and 2011 census for the years 2002 - 2010; and the 2011 census for the years 2011-2012.
3. The Income deprivation and Employment deprivation indicators are derived from SIMD 2012, more information on this deprivation index can be found at: <http://simd.scotland.gov.uk/publication-2012>
4. Life expectancies are calculated based on population estimates and death registrations. 95% confidence intervals have been added on the graphs to give an indication of their accuracy. The x-axes of the life expectancy graphs give the mid-year for each life expectancy estimate e.g. 2010 represents the life expectancy estimate for the period 2008 - 2012.
5. A notes and definitions document providing further information on the variables presented in the profile can be found in the Profiles section of the Understanding Glasgow website.