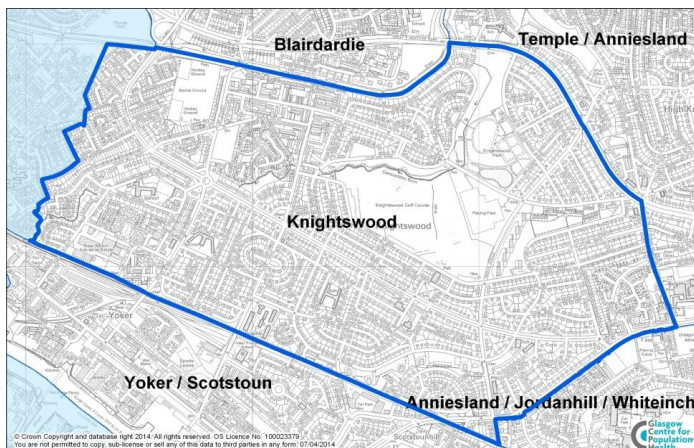


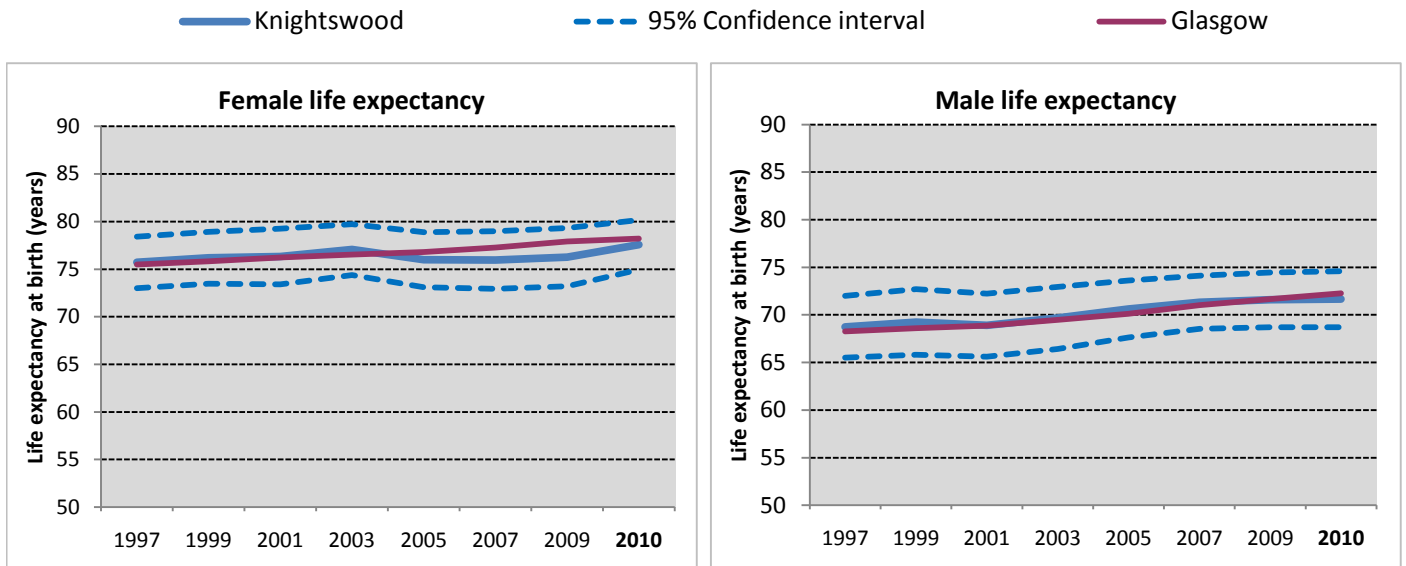
Knightswood is a neighbourhood in the north west of Glasgow with a population of 17,525.



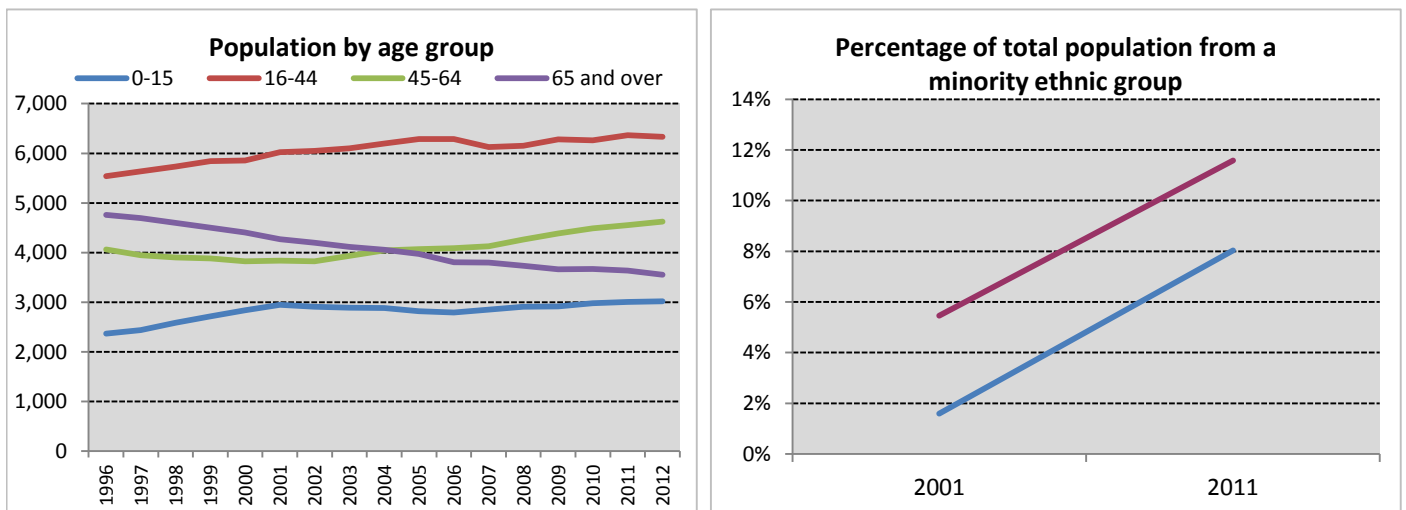
Neighbourhood comparisons with Glasgow

Women in Knightswood live, on average, six years longer than men. The estimates of life expectancy for males and females are very similar to the Glasgow average. The area has a relatively high percentage of older people - defined as aged 65 years and over. The majority of households in the area are owner occupied and only 11% of people live within 500 metres of vacant or derelict land. A relatively high percentage of young people are not in education, employment or training compared with the Glasgow average. Just under 30% of people are limited 'a little' or 'a lot' by a disability.

Group	ID	Indicator	Count	%	Difference from Glasgow		Time Period
Population	P1	People aged 0 - 15	3,019	17.2%		+6%	2012
	P2	People aged 16 - 64	10,955	62.5%		-11%	
	P3	People aged 65 - 74	1,584	9.0%		+25%	
	P4	People aged 75 and over	1,967	11.2%		+68%	
Cultural	C1	People from an ethnic minority	1,411	8.0%		-31%	2011
	C2	People who are married, in a civil partnership, or co-habiting	6,287	44.2%		+5%	
	C3	Single parent households	783	38.4%		-5%	
	C4	Householders living alone	3,533	20.5%		-4%	
	C5	People with religious affiliation	11,459	65.3%		+5%	
Environment/ Transport	E1	People who travel to place of work or study by walking, bike or public transport	3,993	41.9%		-17%	2011
	E2	People living within 500m of vacant or derelict land	1,989	11.1%		-82%	
	E3	Households with one or more cars	4,317	51.8%		+5%	
	E4	Overcrowded households	1,191	14.3%		-18%	
Socio-economic	S1	Owner occupied households	4,516	54.1%		+19%	2011
	S2	People with grade D or E social classification	2,194	37.6%		+11%	
	S3	People in employment	6,771	53.9%		-5%	
	S4	People claiming Employment and Support Allowance	660	3.8%		+9%	2012
	S5	People claiming out of work benefits	2,670	25.5%		+19%	
Education	ED1	Adults with qualifications at Higher level and above	5,556	38.2%		-21%	2011
	ED2	Young people not in education, employment or training	122	14.5%		+23%	
Poverty	PO1	People in income deprivation	3,985	22.7%		+6%	2012
	PO2	People of working age in employment deprivation	2,430	23.0%		+20%	2011
	PO3	Children in poverty	985	30.2%		-6%	
Health	H1	People in "good" or "very good" health	12,669	72.2%		-7%	2011
	H2	People limited "a lot" or "a little" by disability	5,026	28.6%		+26%	
	H3	Male life expectancy	71.6 years			-1%	2008 -
	H4	Female life expectancy	77.6 years			-1%	2012



Life expectancy for both males and females has risen in recent years in Knightswood and has been similar to the Glasgow average throughout the period.



The population in Knightswood increased by 5% between 1996 and 2012, largely due to increases in the numbers of children and working age adults (aged 16-64). The number of older people in the area gradually decreased. The percentage of the total neighbourhood population from a minority ethnic group increased from 2% in 2001 to 8% in 2011, but remained considerably lower than the Glasgow average between 2001 and 2011.

Notes

1. Data sources: Scottish Index of Multiple Deprivation (SIMD) 2012, Census 2011, Census 2001, HMRC, NOMIS, National Records of Scotland (NRS) and Scottish Government.
2. Populations presented in the population trend chart and used to calculate life expectancy estimates are taken from NRS small area population estimates and are based on: the 2001 census for the years 1996 - 2001; both the 2001 and 2011 census for the years 2002 - 2010; and the 2011 census for the years 2011-2012.
3. The Income deprivation and Employment deprivation indicators are derived from SIMD 2012, more information on this deprivation index can be found at: <http://simd.scotland.gov.uk/publication-2012>
4. Life expectancies are calculated based on population estimates and death registrations. 95% confidence intervals have been added on the graphs to give an indication of their accuracy. The x-axes of the life expectancy graphs give the mid-year for each life expectancy estimate e.g. 2010 represents the life expectancy estimate for the period 2008 - 2012.
5. A notes and definitions document providing further information on the variables presented in the profile can be found in the Profiles section of the Understanding Glasgow website.