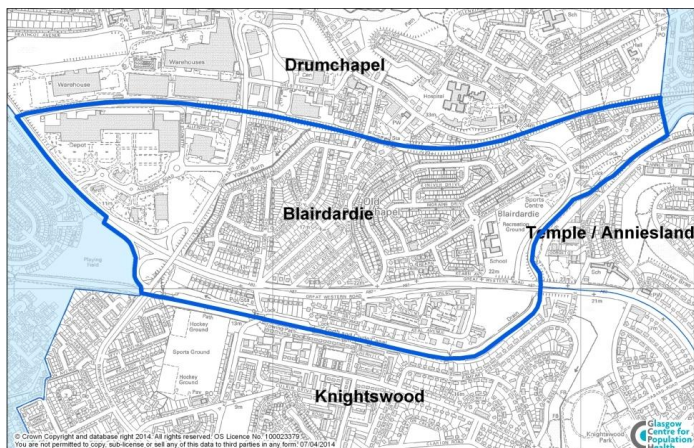


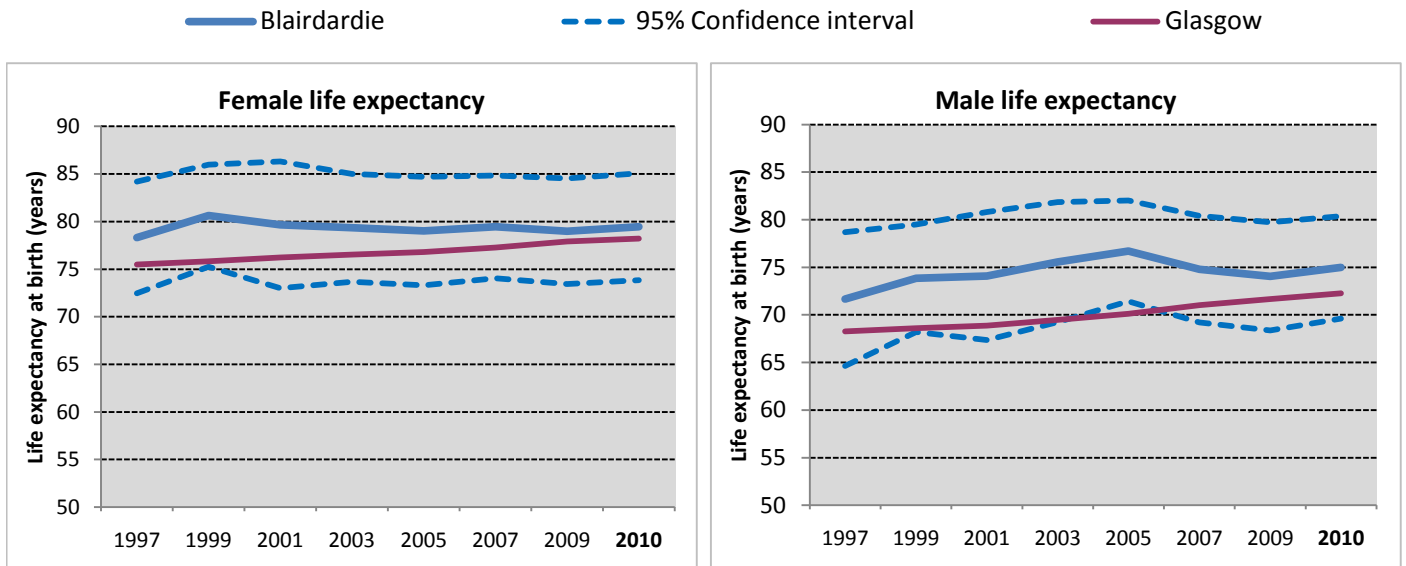
Blairdardie is a neighbourhood in the north west of Glasgow with a population of 3,878.



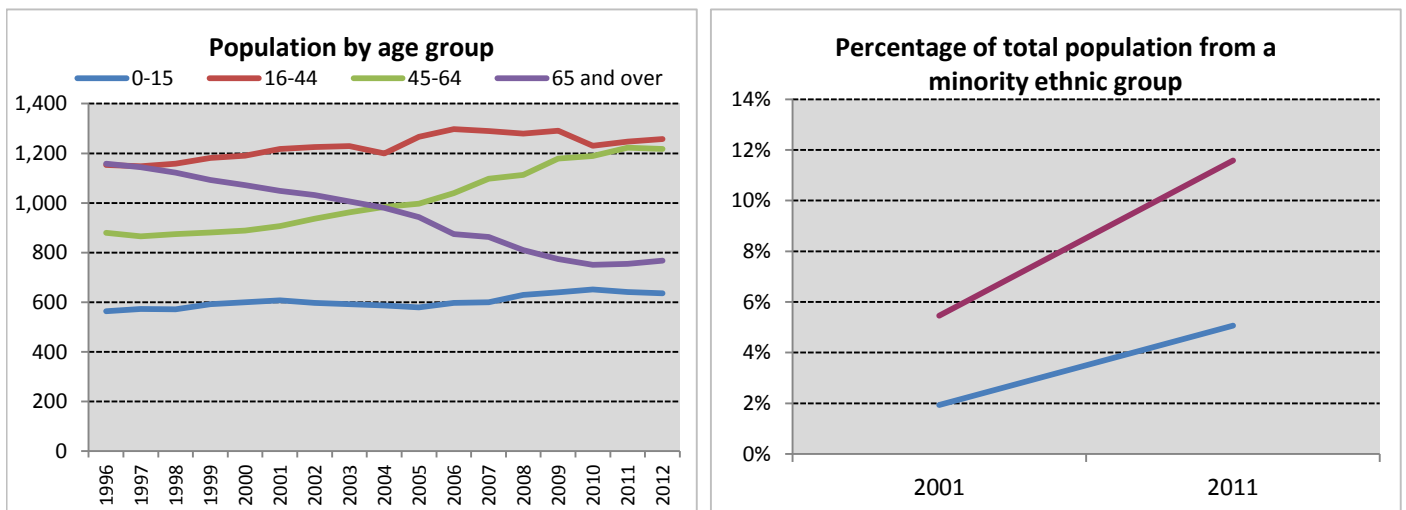
Neighbourhood comparisons with Glasgow

Women in Blairdardie live, on average, four years longer than men. The estimates of both male and female life expectancy in Blairdardie are slightly higher than the Glasgow average. The area has a relatively high percentage of older people - defined as aged 65 years and over. The majority of households in the area, 60%, are owner occupied. Claimant rates for unemployment and disability benefits are lower than the Glasgow average, although higher than the Scottish average.

Group	ID	Indicator	Count	%	Difference from Glasgow		Time Period
Population	P1	People aged 0 - 15	636	16.4%		+1%	2012
	P2	People aged 16 - 64	2,475	63.8%		-9%	
	P3	People aged 65 - 74	316	8.1%		+12%	
	P4	People aged 75 and over	451	11.6%		+74%	
Cultural	C1	People from an ethnic minority	196	5.1%		-56%	2011
	C2	People who are married, in a civil partnership, or co-habiting	1,598	49.5%		+18%	
	C3	Single parent households	144	31.9%		-21%	
	C4	Householders living alone	706	18.3%		-14%	
	C5	People with religious affiliation	2,455	63.5%		+2%	
Environment/ Transport	E1	People who travel to place of work or study by walking, bike or public transport	860	38.2%		-24%	2011
	E2	People living within 500m of vacant or derelict land	1,480	38.7%		-36%	
	E3	Households with one or more cars	1,031	57.2%		+16%	
	E4	Overcrowded households	180	10.0%		-43%	
Socio-economic	S1	Owner occupied households	1,083	60.1%		+32%	2011
	S2	People with grade D or E social classification	391	32.0%		-6%	
	S3	People in employment	1,665	60.0%		+6%	
	S4	People claiming Employment and Support Allowance	100	2.6%		-25%	2012
	S5	People claiming out of work benefits	435	18.5%		-13%	
Education	ED1	Adults with qualifications at Higher level and above	1,338	41.5%		-14%	2011
	ED2	Young people not in education, employment or training	20	10.9%		-8%	
Poverty	PO1	People in income deprivation	680	17.5%		-18%	2012
	PO2	People of working age in employment deprivation	380	16.0%		-16%	2011
	PO3	Children in poverty	135	19.5%		-39%	
Health	H1	People in "good" or "very good" health	2,977	77.0%		-1%	2011
	H2	People limited "a lot" or "a little" by disability	951	24.6%		+8%	
	H3	Male life expectancy	75.0 years			+4%	2008 - 2012
	H4	Female life expectancy	79.4 years			+2%	



Life expectancy has risen in recent years in Blairdardie and has remained above the Glasgow average, particularly for men. Both the male and female life expectancy was similar to the Scottish average throughout the period shown.



The overall population in Blairdardie increased slightly by 3% between 1996 and 2012. The number of 45-64 year olds increased by 38%, while the number of older people in the area fell by 34%.

The percentage of the total neighbourhood population from a minority ethnic group increased from 2% in 2001 to 5% in 2011. The percentage of the neighbourhood's population from an ethnic minority group remained lower than the Glasgow average between 2001 and 2011.

Notes

1. Data sources: Scottish Index of Multiple Deprivation (SIMD) 2012, Census 2011, Census 2001, HMRC, NOMIS, National Records of Scotland (NRS) and Scottish Government.
2. Populations presented in the population trend chart and used to calculate life expectancy estimates are taken from NRS small area population estimates and are based on: the 2001 census for the years 1996 - 2001; both the 2001 and 2011 census for the years 2002 - 2010; and the 2011 census for the years 2011-2012.
3. The Income deprivation and Employment deprivation indicators are derived from SIMD 2012, more information on this deprivation index can be found at: <http://simd.scotland.gov.uk/publication-2012>
4. Life expectancies are calculated based on population estimates and death registrations. 95% confidence intervals have been added on the graphs to give an indication of their accuracy. The x-axes of the life expectancy graphs give the mid-year for each life expectancy estimate e.g. 2010 represents the life expectancy estimate for the period 2008 - 2012.
5. A notes and definitions document providing further information on the variables presented in the profile can be found in the Profiles section of the Understanding Glasgow website.