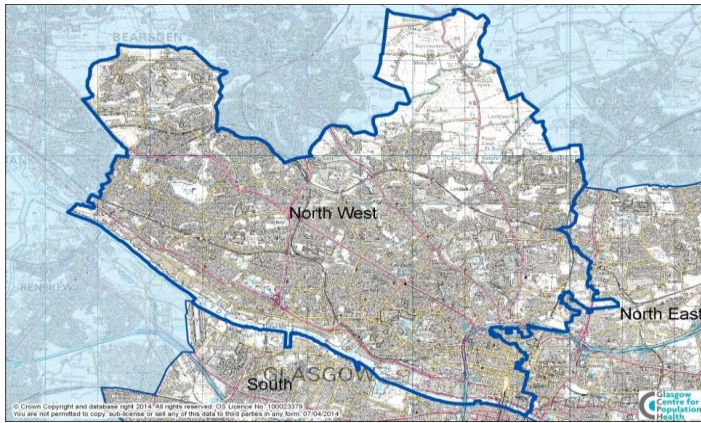


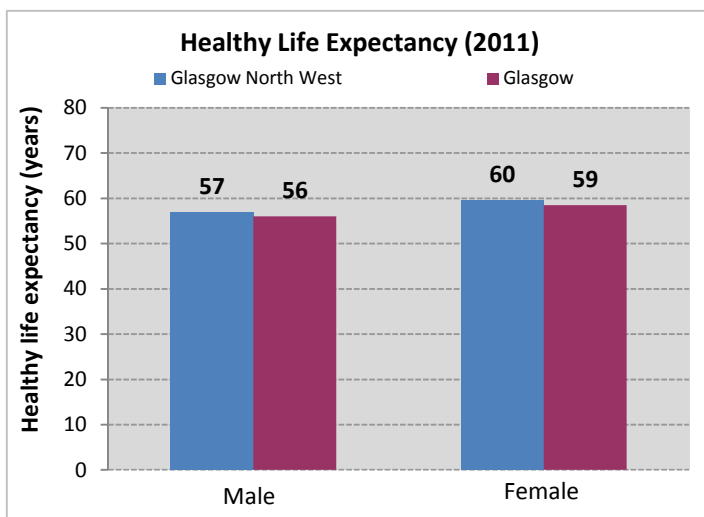
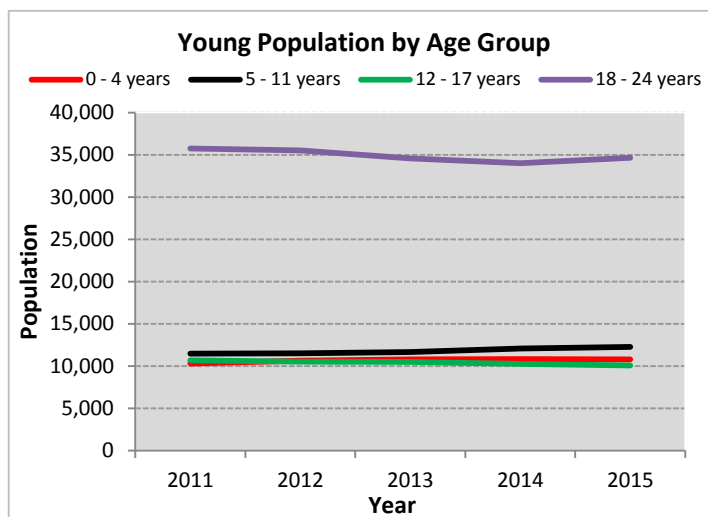
Glasgow North West has a population of 67,810 children and young people (aged 0-24 years).



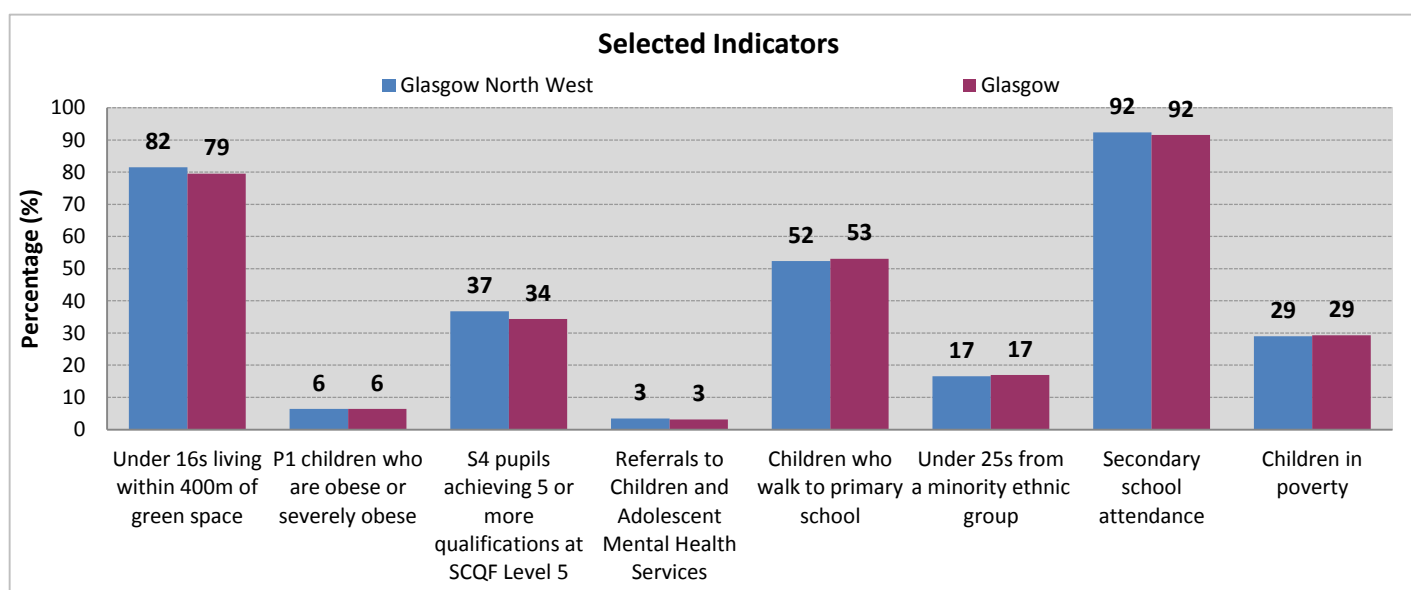
Neighbourhood Comparisons with Glasgow

The proportion of school age children in Glasgow North West is lower than Glasgow as a whole. 17% of under 25s are from a minority ethnic group. 82% of children live within 400m of green space. The locality has fewer 16-19 years olds not in employment, education or training (-20%) and fewer babies exposed to passive smoking (-20%) than in Glasgow overall. S4 pupil attainment is higher (+7%) than the Glasgow average and 89% of children leaving school go onto a positive destination (higher/further education, employment or training). Likely development difficulties in pre-school children are lower than the Glasgow average (-3%) and communication delay in young children is also lower than average (-14%).

Domain	Indicator	Count	Rate	Difference from Glasgow	Period
Demography	Population aged 0 to 4	10,800	5%	-13%	2015
	Population aged 5 to 11	12,280	6%	-14%	2015
	Population aged 12 to 17	10,073	5%	-15%	2015
	Population aged 18 to 24	34,657	16%	+37%	2015
	Birth rate (per 1,000 pop'n)	2,262	10.9	-11%	2013
	Under 25s from a minority ethnic group	11,461	17%	-2%	2011
Infant Health	Infants who sleep in the supine position	1,781	94%	+2%	2015
	Babies exposed to passive smoking	N/A	12%	-20%	2014/15
	Babies with birth weight below 2500g	150	2%	-11%	2013 - 2015
Culture and Environment	Children who walk to primary school	N/A	52%	-1%	2008 - 2015
	Under 16s living within 400m of green space	24,052	82%	+3%	2014
	P1 children who are obese or severely obese	N/A	6%	+1%	2012/13 - 2014/15
	Hospitalisations for dental treatment (per 1,000 pop'n under 16)	354	12.0	-10%	2014
Crime and Safety	Referrals to Scottish Children's Reporter Administration ⁶	529	2%	-0%	2015/16
	Offenders (per 1,000 pop'n aged 8 to 18)	509	26.1	-12%	2015/16
	Victims of crime (per 1,000 pop'n aged 8 to 18)	383	19.7	-6%	2015/16
	Emergency hospitalisations due to assault (per 1,000 pop'n under 25)	N/A	1.0	-23%	2010/11 - 2014/15
	Emergency hospitalisations for unintentional injuries (per 1,000 pop'n under 15)	N/A	10.4	+3%	2010/11 - 2014/15
Socio-Economic	Children in poverty	9,385	29%	-1%	2013
	Lone parent households	7,948	40%	-1%	2011
	Overcrowded households with children	5,182	19%	+2%	2011
Learning and Education	Children with communication delay at 27 to 30 months	783	20%	-14%	2014
	S4 pupils achieving 5 or more qualifications at SCQF Level 5	543	37%	+7%	2012 - 2013
	Secondary school attendance	N/A	92%	+1%	2013/14
	School leavers with a positive destination	1,281	89%	-1%	2013
	16 to 19 year olds not in employment, education or training	2,754	22%	-20%	2012
Health and Wellbeing	Pre-school children with likely development difficulties	N/A	7%	-3%	2012 - 2014
	Referrals to Children and Adolescent Mental Health Services	1,008	3%	+8%	2015/16
	Male healthy life expectancy (years)	N/A	56.9	+2%	2011
	Female healthy life expectancy (years)	N/A	59.6	+2%	2011
	Under 25s whose day-to-day activities are limited by disability	3,681	5%	-10%	2011



The number of 18-24 year olds in Glasgow North West has decreased by 3% since 2011, while the number of 5-11 year olds has increased by 7%. Healthy life expectancy for males and females is approximately 1 year higher than Glasgow as a whole.



Pupil attainment in Glasgow North West is higher than in Glasgow overall, while child poverty and P1 obesity levels are on a par with the Glasgow average. Although more children than average live in proximity to green space, primary school children are slightly less likely to walk to school when compared to the Glasgow average. Secondary school attendance and referrals to children and adolescent mental health services are also on a par with the Glasgow average.

Notes

1. Data sources: Census 2011, GCPH, Glasgow City Council, HMRC - Child Poverty Unit, ISD Scotland, National Records of Scotland (NRS), Transport Scotland, Sustrans, Police Scotland, the Scottish Government and the Urban Big Data Centre, Glasgow University.
2. Indicators are aggregated using latest available datazone (2001 or 2011); neighbourhood boundaries based on 2001 datazones.
3. All count figures of less than 5 (denoted as '< 5') have been suppressed to avoid any potential identification.
4. Populations presented in the population trend chart, also used to calculate healthy life expectancy estimates, use NRS small area population estimates for the years 2011 - 2015.
5. 'Healthy life expectancy' is an estimate of the average number of years people are likely to spend in good health. It is shorter than 'life expectancy' because it excludes years likely to be spent in fair or poor health. It is calculated using population estimates, death registrations and self-assessed health from the 2011 Census.
6. Denotes children referred to the Scottish Children's Reporter Administration for an offence or non-offence related reason.
7. A notes and definitions document providing further information on the indicators presented in the profile can be found in the Profiles section of www.understandingglasgow.com/profiles.