

# Children's Report Card – Environment

Graphs related to sub-sections covering\*:

Access to greenspace

Living near derelict land

Air quality

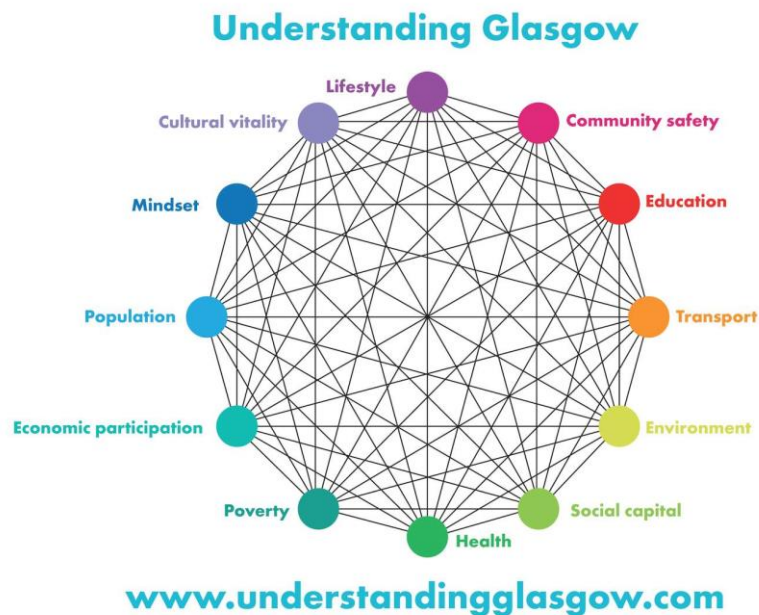
Smoking during pregnancy

Asthma

Active travel to school

Child pedestrian injuries

Houses in disrepair

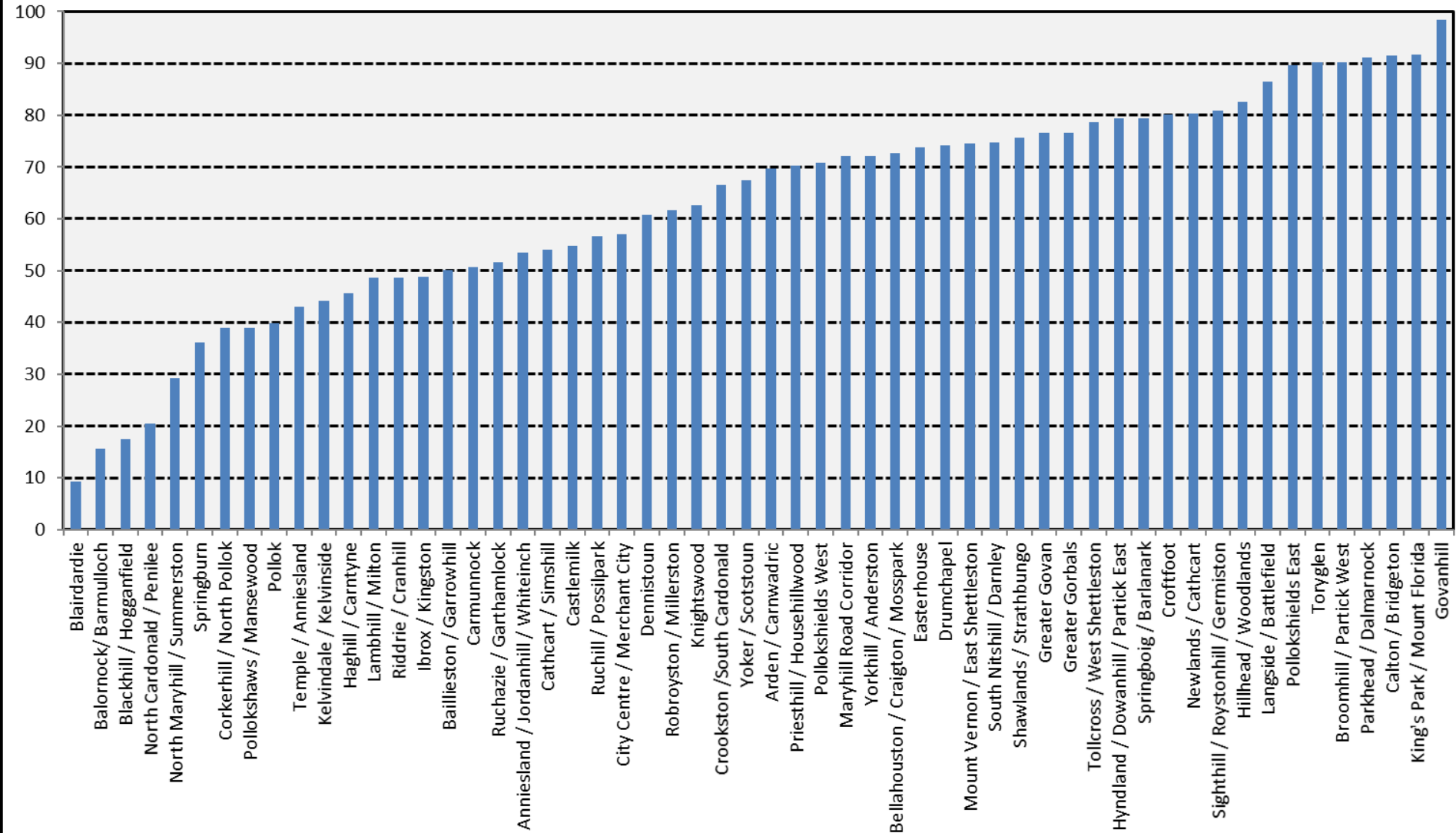


*\* Only a minority of these graphs were published in the report card but they are relevant to the report card commentary*

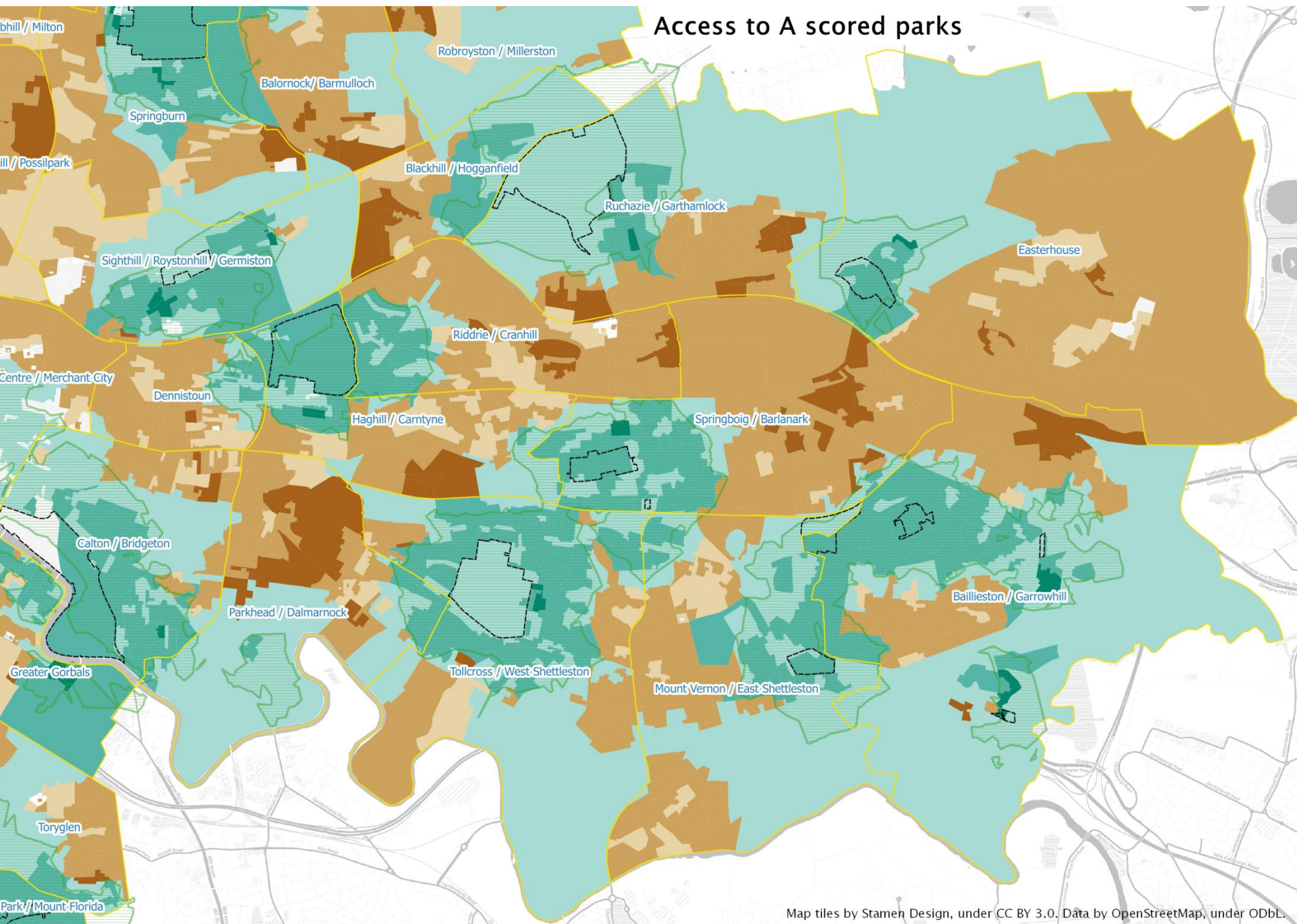
# Children's access to greenspace

**% of children in Glasgow living within 400m of a Grade A park or play space by Glasgow neighbourhood**

Source: data provided by Glasgow City Council, modelled by UBDC, University of Glasgow



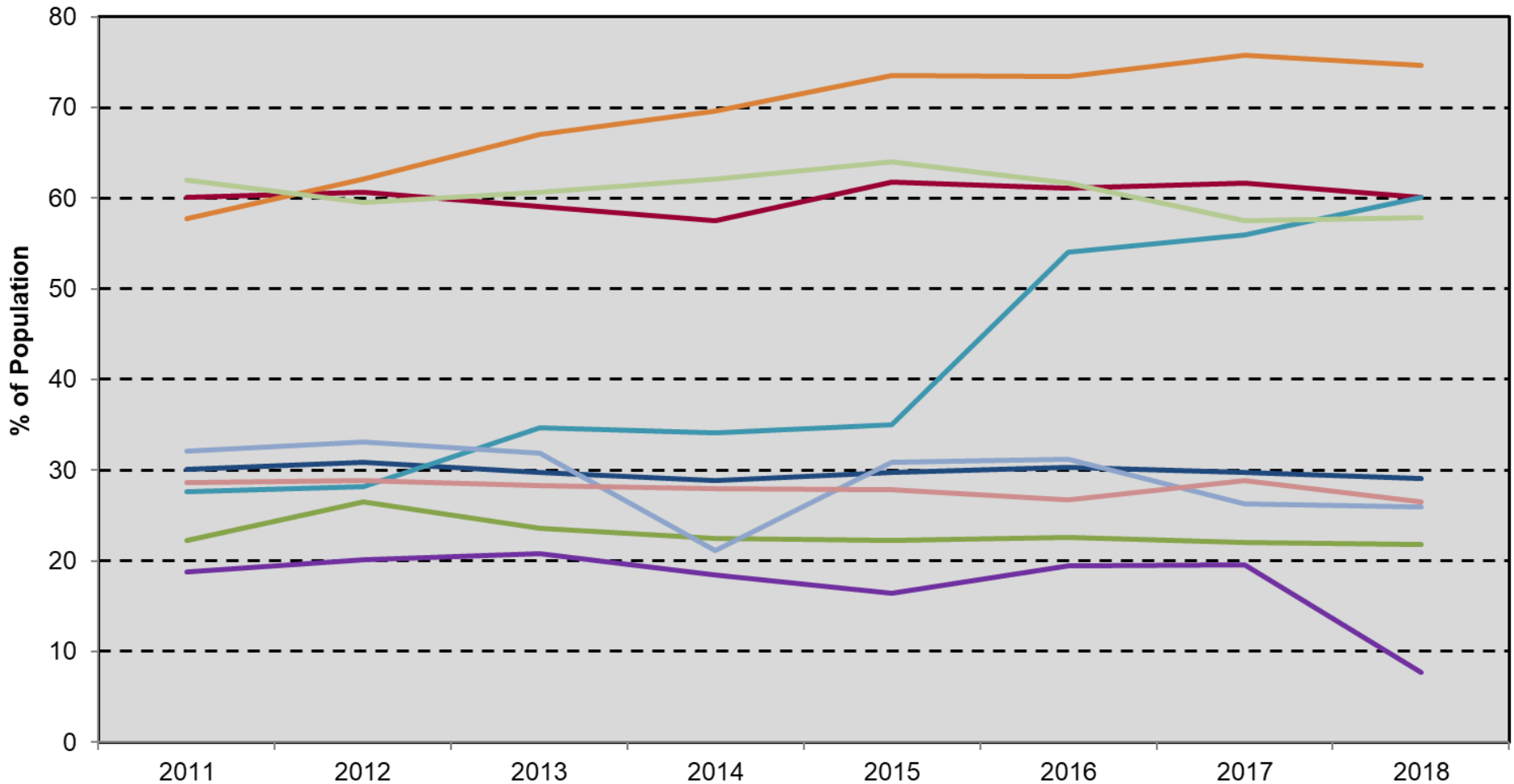
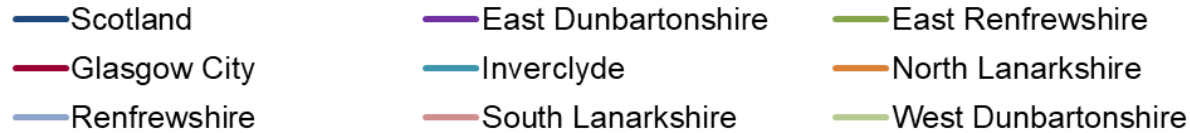
# Children's access to Grade A parks – Glasgow East



# Living near derelict land

Percentage of population living within 500m of derelict land, 2011 - 2018

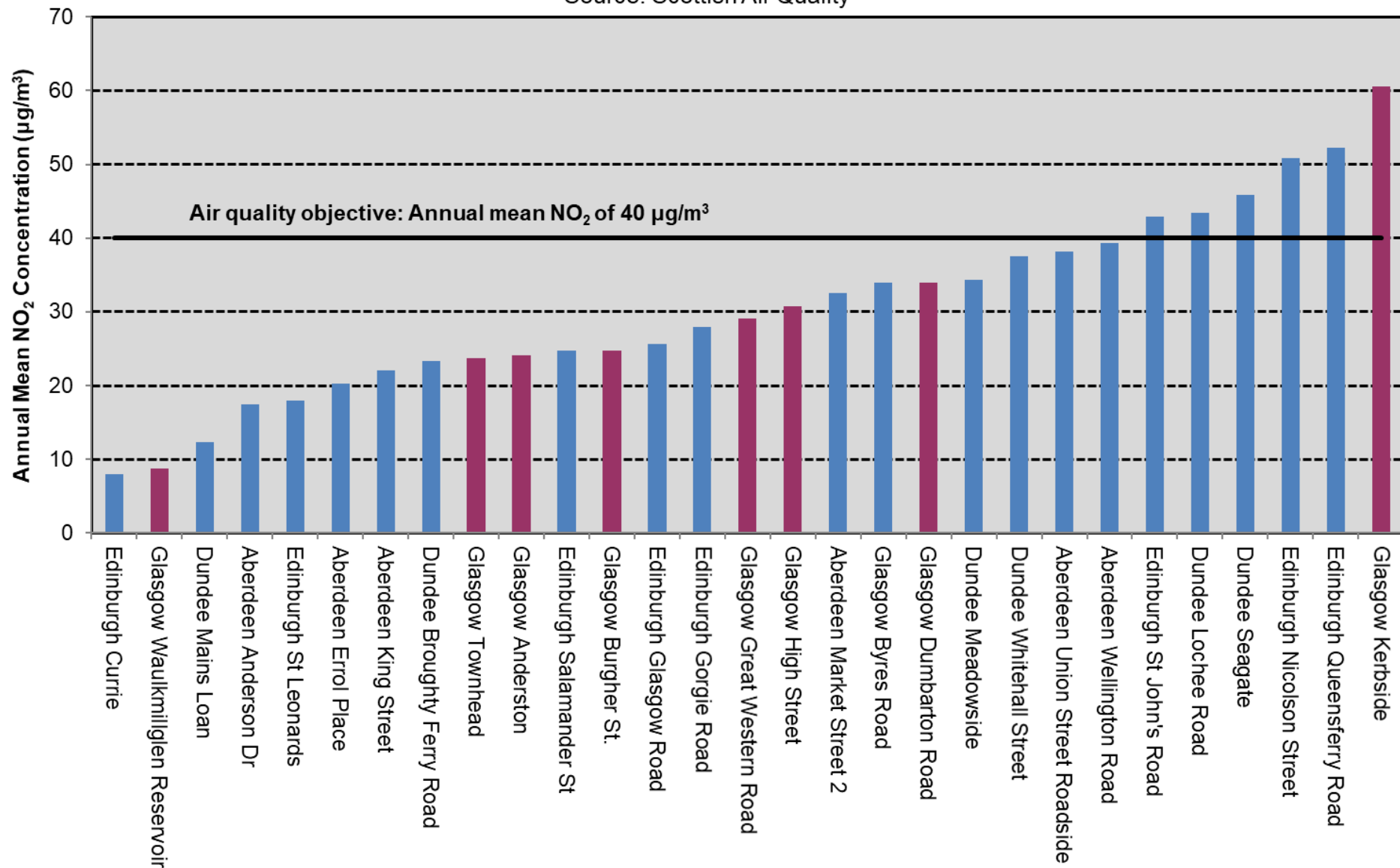
Source: Scottish Vacant and Derelict Land Survey



# Air quality – NO<sub>2</sub> Scottish cities (2018)

Annual mean NO<sub>2</sub> concentration at monitoring sites in selected Scottish cities, 2018

Source: Scottish Air Quality

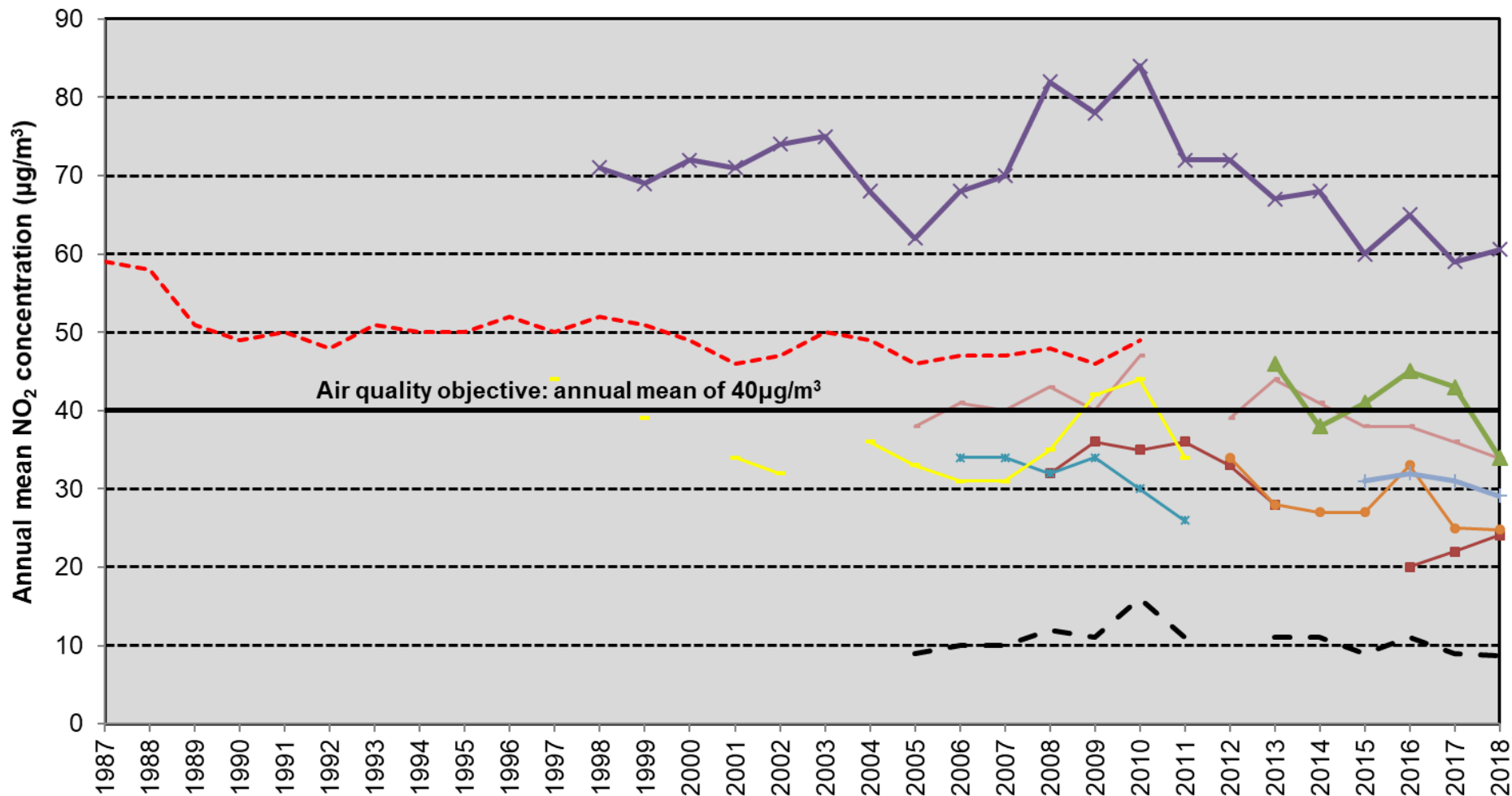


# Air quality – NO<sub>2</sub> trends, Glasgow

Annual mean NO<sub>2</sub> concentration at selected Glasgow monitoring sites, 1987 - 2018

Source: Scottish Air Quality

- Anderston
- Battlefield Road
- Burgher St
- Byres Road
- Centre
- City Chambers
- Dumbarton Road
- Kerbside
- Great Western Road
- Waulkmillglen Reservoir

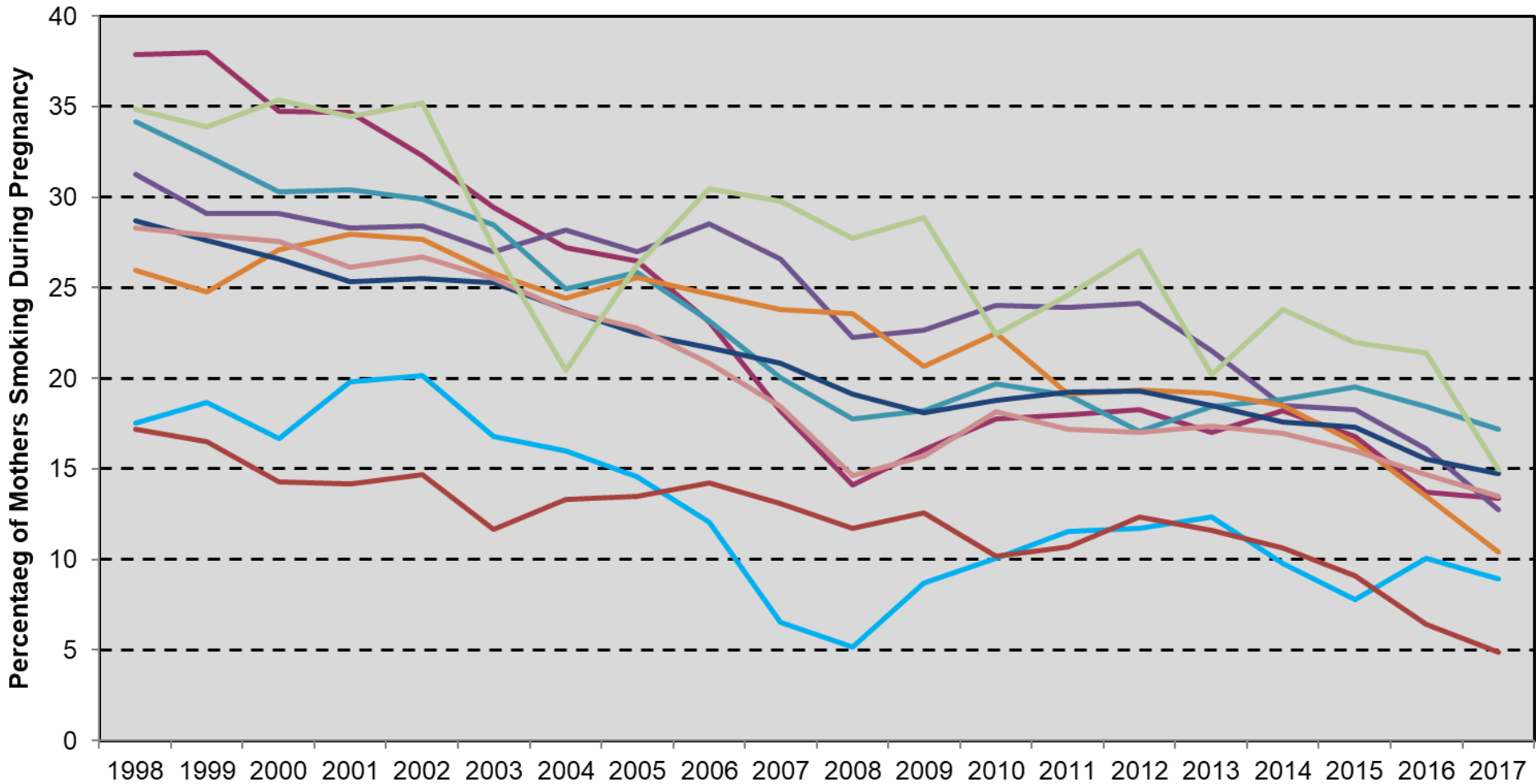


# Smoking in pregnancy

## Mothers smoking during pregnancy (at first antenatal appointment)

Source: ISD Scotland

- East Dunbartonshire
- Inverclyde
- Scotland
- East Renfrewshire
- North Lanarkshire
- South Lanarkshire
- Glasgow City
- Renfrewshire
- West Dunbartonshire

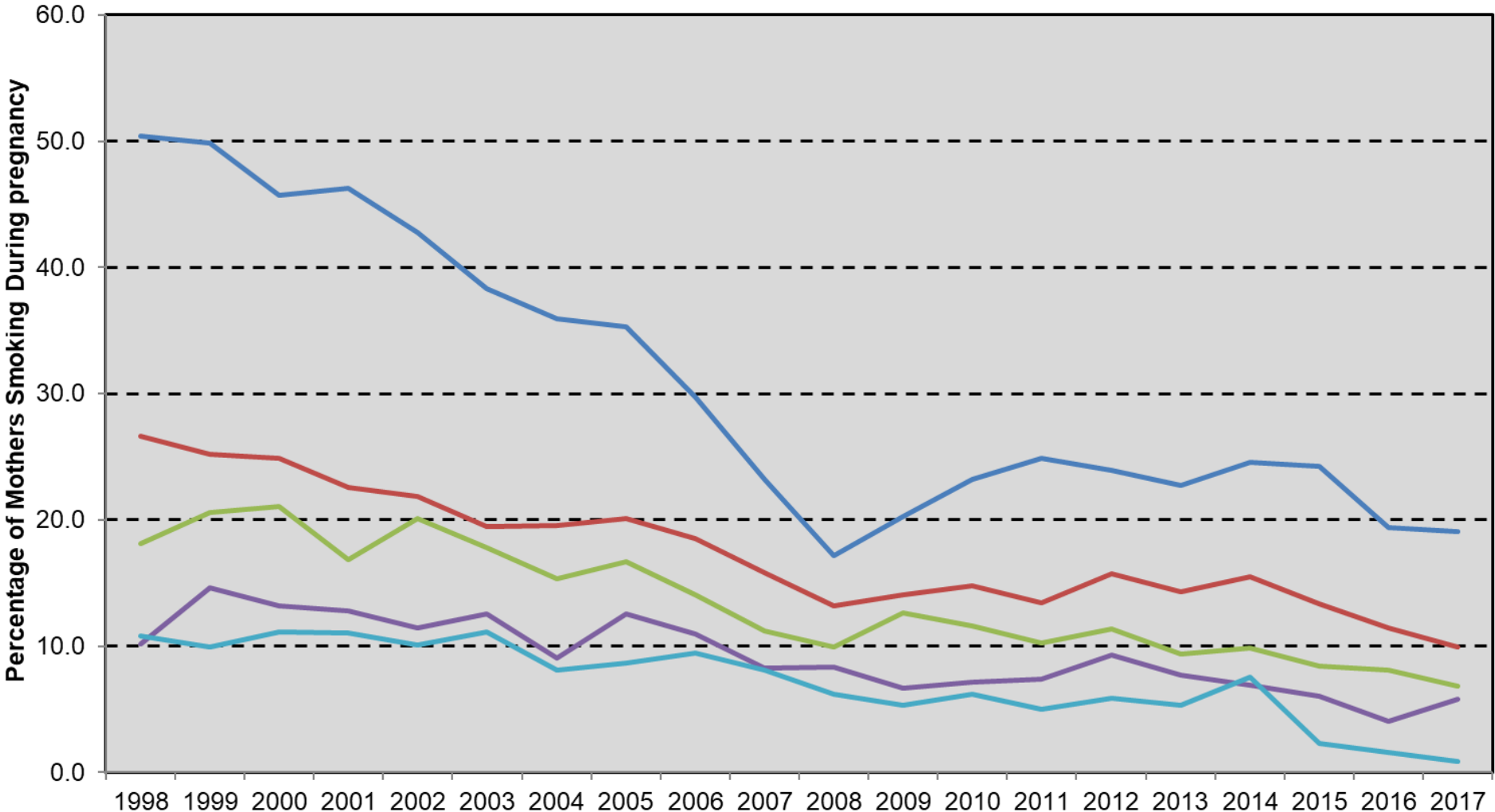


# Smoking in pregnancy by deprivation

**Mothers smoking during pregnancy (at first antenatal appointment)  
by deprivation in Glasgow City**

Source: ISD Scotland

— Quintile 1 (most deprived) — Quintile 2 — Quintile 3 — Quintile 4 — Quintile 5 (least deprived)

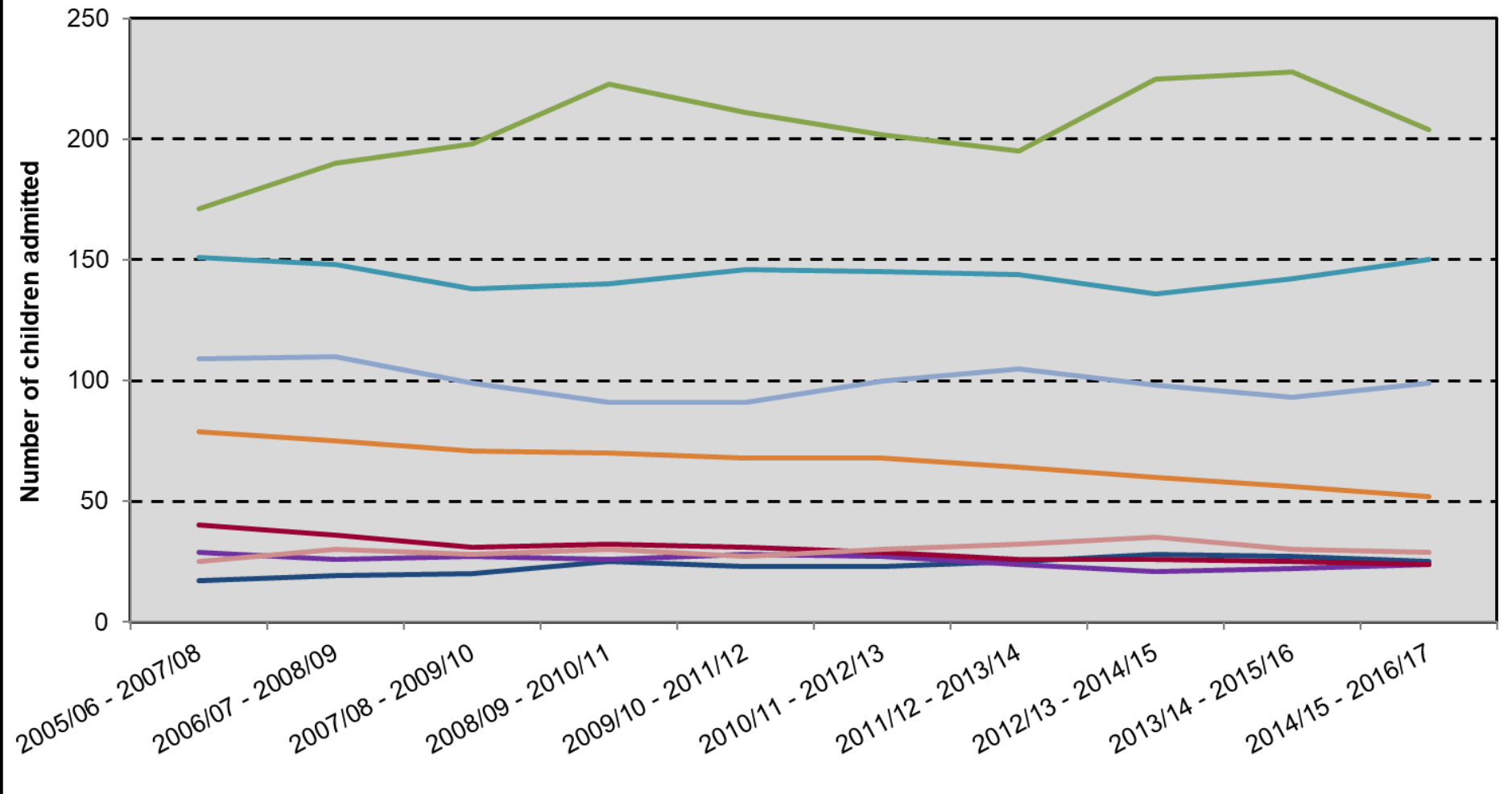
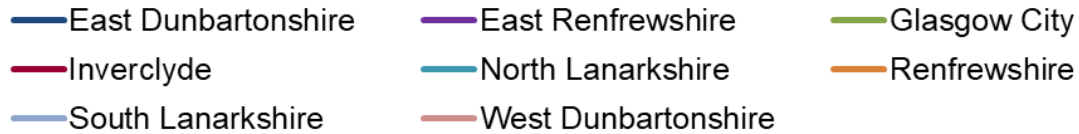




# Asthma – child hospital admissions

Number of children admitted to hospital due to asthma, 2005/06 - 2016/17

Source: ISD Scotland

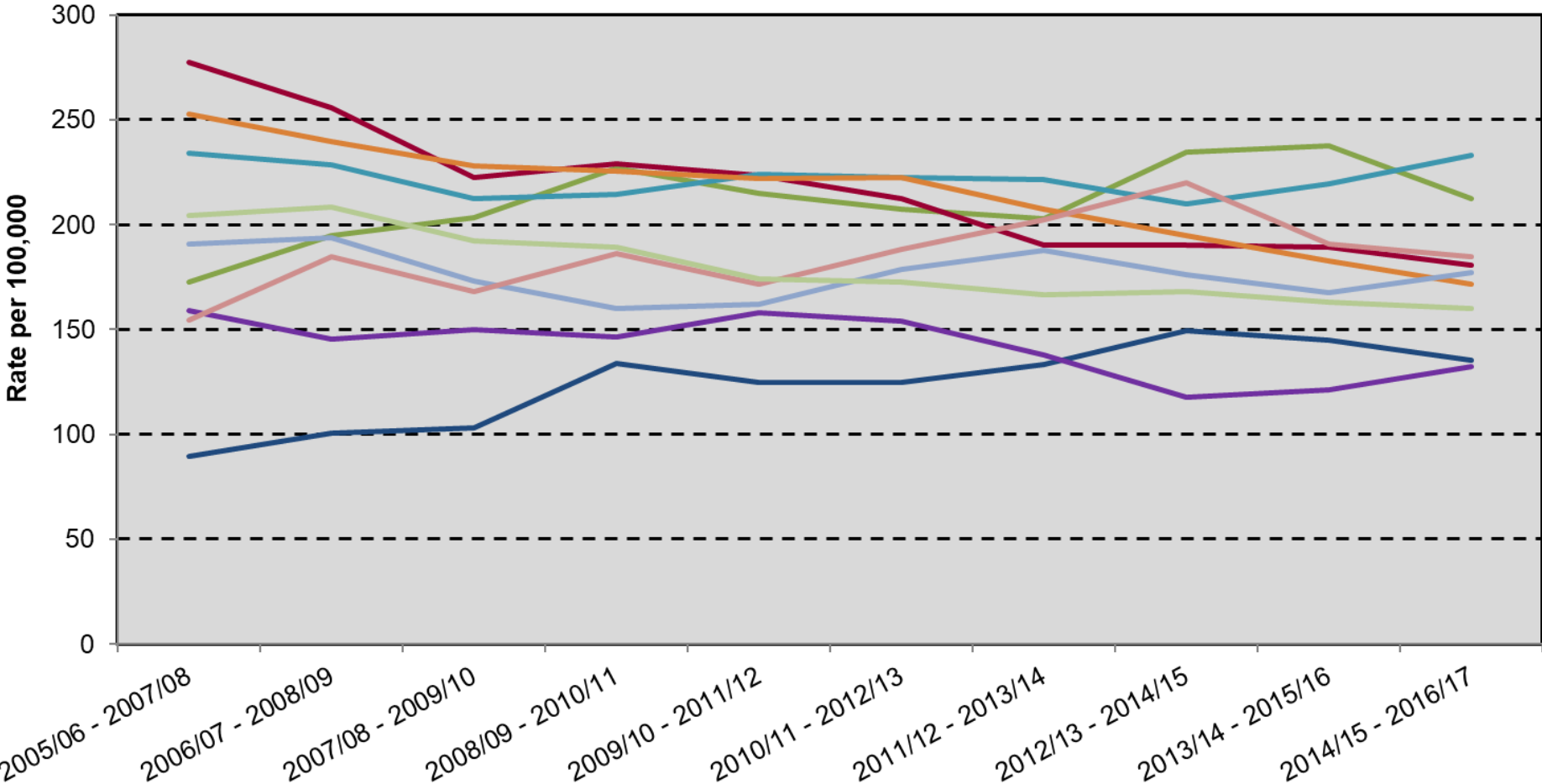


# Asthma – child hospital admission rates

Rate of children per 100,000 admitted to hospital due to asthma, 2005/06 - 2016/17

Source: ISD Scotland

- East Dunbartonshire
- East Renfrewshire
- Glasgow City
- Inverclyde
- North Lanarkshire
- Renfrewshire
- South Lanarkshire
- West Dunbartonshire
- Scotland

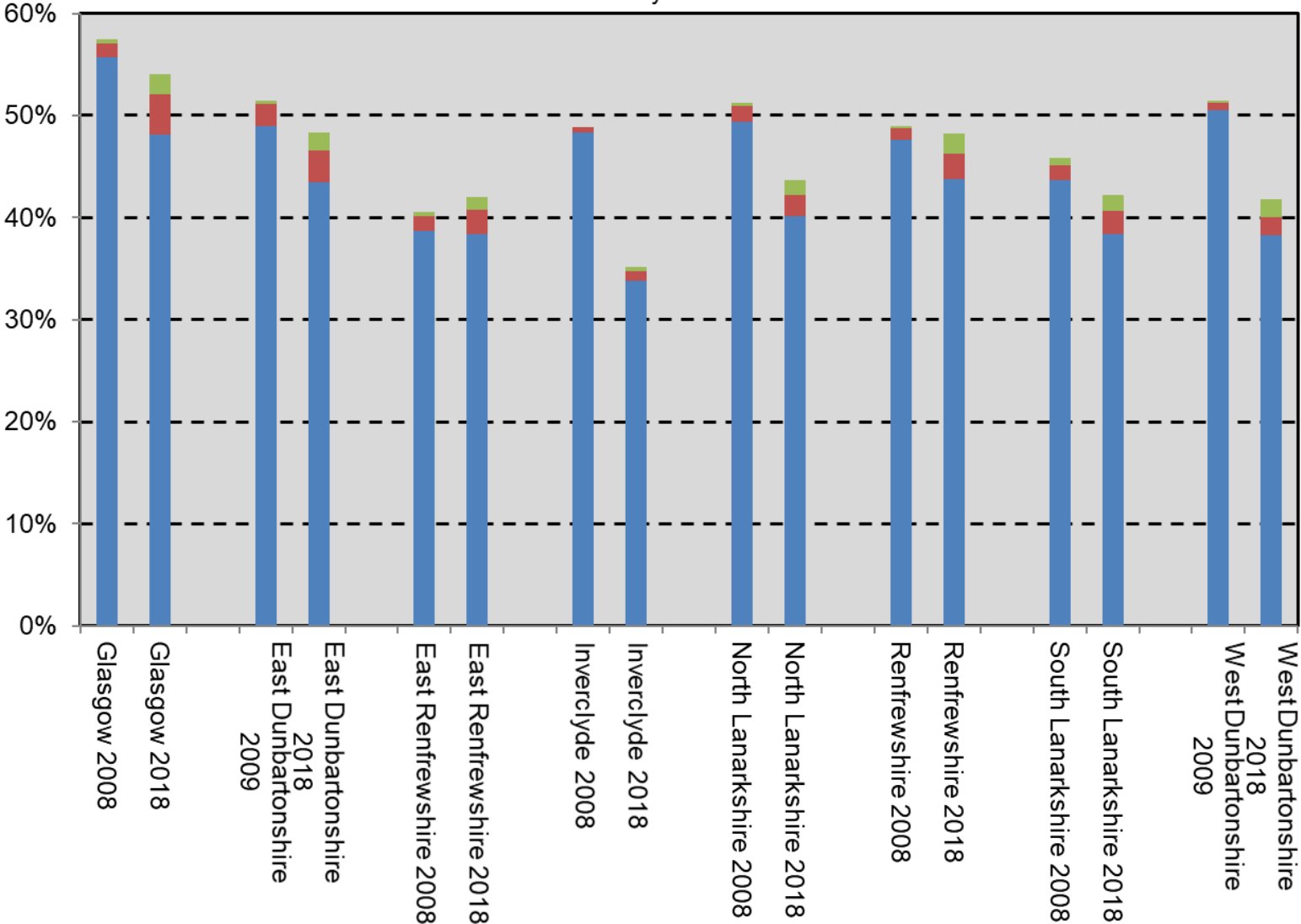


# Active travel to school

**Active travel to school, 2008 - 2018**

Source: Sustrans (Hands Up Survey)

Walk Cycle Scooter / Skate



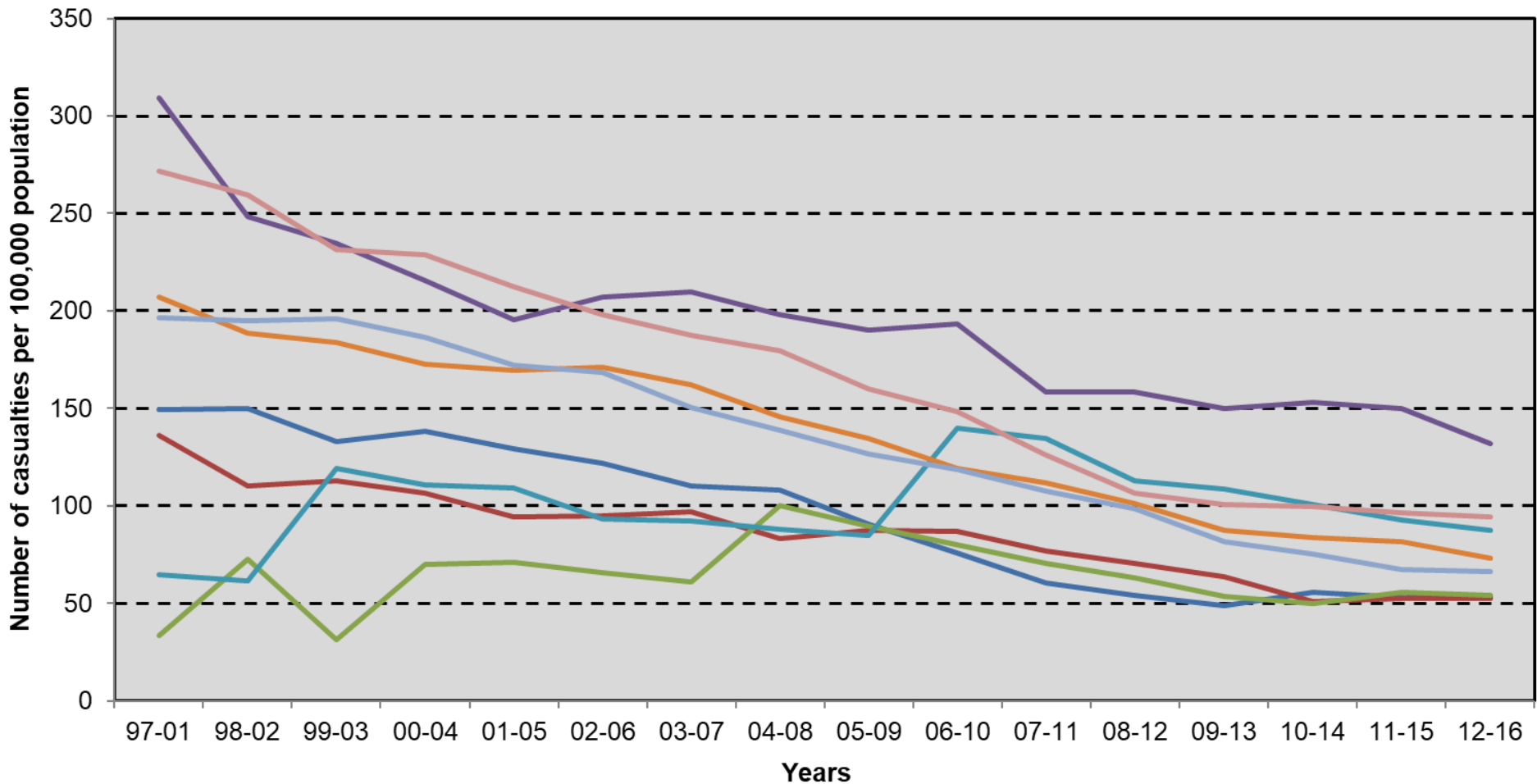
% share by travel mode

# Child pedestrian road casualties

**Child (aged 5 to 15) pedestrian road casualties per 100,000 population, 1997-2001 to 2012-2016 (5-year averages)**

Source: Transport Scotland (Stats 19)

— East Dunbartonshire — East Renfrewshire — Glasgow City — Inverclyde  
— North Lanarkshire — Renfrewshire — South Lanarkshire — West Dunbartonshire



# Housing in disrepair

## Households in Urgent Disrepair, 2010-2012 to 2014-2016

Source: Scottish Household Condition Survey

■ 2010-2012 ■ 2011-2013 ■ 2012-2014 ■ 2013-2015 ■ 2014-2016

